



Pan & Tilt Dome IP Camera with 3x Zoom and Night Vision

IPV68

User Manual



Index

- 1.0 INTRODUCTION**
 - 1.1 Features**
 - 1.2 Packing List**
 - 1.3 Product Views, Connections and Buttons**
 - 1.4 PC System Requirements**
 - 1.5 Hardware Installation**
 - 1.6 Software Installation**

- 2.0 Software Operation**
 - 2.1 IP Camera Tool**
 - 2.1.1.1 Basic Properties**
 - 2.1.1.2 Network Configuration**
 - 2.1.1.3 Upgrade Firmware**
 - 2.1.1.4 Refresh Camera List**
 - 2.1.1.5 Flush Arp Buffer**
 - 2.1.1.6 About IP Camera Tool**
 - 2.2 Camera Login**
 - 2.3 For IE Browser**
 - 2.4 For Safari, Firefox, Google Browser**
 - 2.5 For Mobile Phone**
 - 2.6 ActiveX Mode (For IE Browser)**
 - 2.7 For Visitor**
 - 2.8 For Operator**
 - 2.9 For Administrator**

- 3.0 SETTINGS AS ADMINISTRATOR**
 - 3.1 Multi-Device Settings**
 - 3.1.1 Set Multi-Device in LAN**
 - 3.1.2 Set Multi-Device for WAN**
 - 3.1.3 Upgrade Device Firmware**
 - 3.1.4 Restore Factory Settings**
 - 3.1.5 Reboot Device**
 - 3.2 Network Settings**
 - 3.3 Basic Network Settings**
 - 3.4 Wireless LAN Settings**
 - 3.5 ADSL Settings**
 - 3.6 UPnP Settings**

3.7	DDNS Service Settings
3.7.1	To change the camera's port
3.7.2	DDNS Status
3.7.3	Set Port Forwarding in the router
3.8	System Settings
3.8.1	Device Info
3.9	Alias Settings
3.10	Date & Time Settings
3.11	Users Settings
3.12	Pan, Tilt, (PTZ) Settings
3.13	Indicator Settings
3.14	Backup & Restore
3.15	Other Settings
3.16	Mail Service Settings
3.17	FTP Service Settings
3.18	Alarm Service Settings
3.18.1	Motion Detect Armed
3.18.2	Motion Detect Sensitivity
3.18.3	Alarm Input Armed / IO Linkage on Alarm
3.18.4	IO Pins for IO Alarm Linkage
3.19	Send e-mail on Alarm
3.20	Path Settings
3.21	Server Push Mode (For Safari, FireFox, Google Browser)
3.22	Sign in mobile phone
3.23	Compatible Apps for mobile devices
4.0	APPENDIX
4.1	Frequently Asked Questions
5.0	SPECIFICATIONS
6.0	OBTAINING TECHNICAL SUPPORT

1.0 INTRODUCTION

This is an integrated wireless IP Camera solution. It combines a high quality digital Video Camera with network connectivity and a powerful web server to bring clear pictures to your Desktop from anywhere on your local network or over the Internet.

The main function of the camera is to transmit remote video over IP network. The high quality video image can be transmitted with 30fps speed on the LAN/WAN by using MJPEG hardware compression technology. It is based on the TCP/IP standard, build-in WEB server which supports Internet Explorer. Therefore the management and maintenance of your camera becomes simple by using the network to achieve the remote configuration, start-up and to upgrade firmware.

You can use your IP Camera to monitor your home or your office. Also, controlling and managing images are simple by visiting the web site.

1.1 Features

- ☆ Powerful high-speed video protocol processor
- ☆ High-sensitivity 1/4" CMOS sensor
- ☆ Picture total 300K pixels
- ☆ Supports Pan and Tilt (PT) control, Pan 270°, Tilt 120°
- ☆ Optimized MJPEG video compression for transmission
- ☆ Multi-level user management and passwords definition
- ☆ Embedded Web Server for users to visit by IE
- ☆ Supports wireless network (Wi-Fi/802.11/b/g)
- ☆ Supports Dynamic IP (DDNS) and UPNP LAN and Internet (ADSL, Cable Modem)
- ☆ Gives an alarm in case of motion detection
- ☆ Supports image snapshot
- ☆ Supports multiple protocols: HTTP/TCP/IP/UDP/SMTP/DDNS/SNTP/DHCP/FTP
- ☆ Supports WEP/WPA/WPA2 encryption
- ☆ Supports 3G phone, Smart phone control and surveillance
- ☆ Supports IE, Firefox, Safari, and Google chrome browsers

1.2 Packing List

Please check that the following items are included:

- IP Camera
- Power Supply
- Wi-Fi Antenna
- Network Cable
- Mounting bracket
- Quick Setup Guide
- CD with software and manual

1.3 Product Views

1.3.1 Front View



Figure 1.1

1 Light Sensitive Hole: For light sensitive photocell

2 Infrared LED: 10 LEDs

3 LENS: CMOS sensor with fixed focus lens.

4 Network Indicator LED: If there is network activity, the LED will blink

5 Microphone: Build-in microphone

6 Speaker: Build-in speaker

7 Wireless Antenna: Wi-Fi Antenna

1.3.2 Rear Panel



Figure 1.2

LAN: RJ-45/10-100 base T

Power: DC 5V/2A power supply

Network Light: The green LED is on when connected to the network, the yellow LED blinks when data is

transferred.

Audio Output: The jack is used to connect an external speaker

I/O PINS: 1: Output A 2: Output B 3: Alarm input 4: Input (GND)

1.4 PC System Requirements

System configuration requirements:

CPU: 2.06 GHZ or above.

Memory: 256M or above.

Network Card: 10M or above.

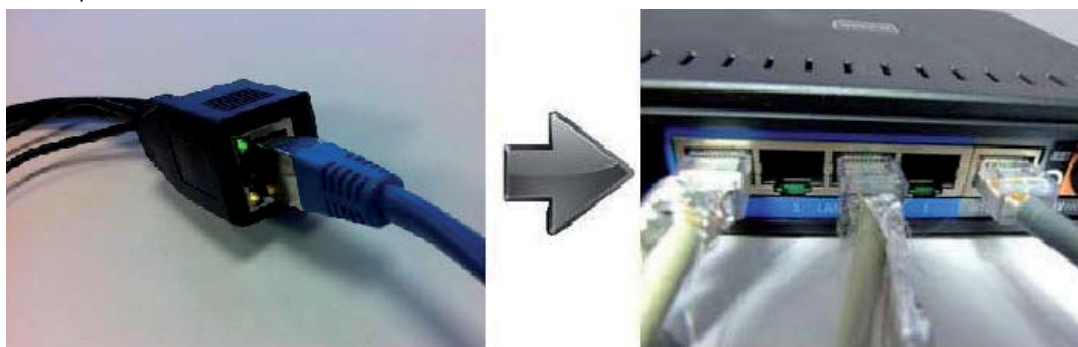
Display Card: 64M or above memory.

Recommended Operating system: Windows XP, Windows Vista, Windows 7.

1.5 Hardware Installation

You need to set up your camera using a network cable (wired) first, before you can use it wirelessly, so let's start with plugging in the network cable. Follow the steps below to set up your camera hardware.

1. Plug one end of the network cable into the camera, and the other end into an empty port of your router/switch/modem.



2. Install the Wi-Fi antenna.
3. Plug the power adaptor into the camera and into an AC outlet.
4. It takes approximately 30 seconds to boot up the camera.
5. When the power is on and the network cable is connected, the green LED on the rear panel next to the network cable will stay on, please make sure the Green light is on before we continue.
The yellow LED will keep flashing, and the Indicator LED on the front of the camera will flash when the connection is established. (The behavior of the front indicator LED can be controlled by software).

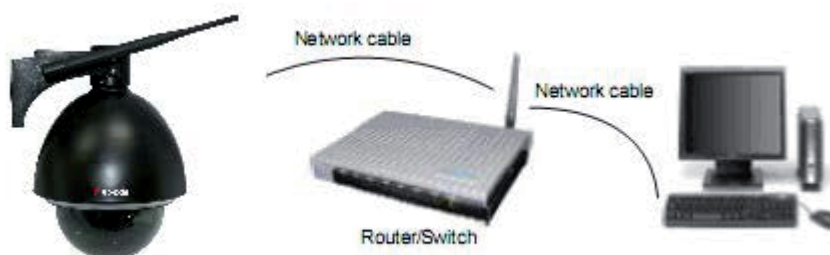


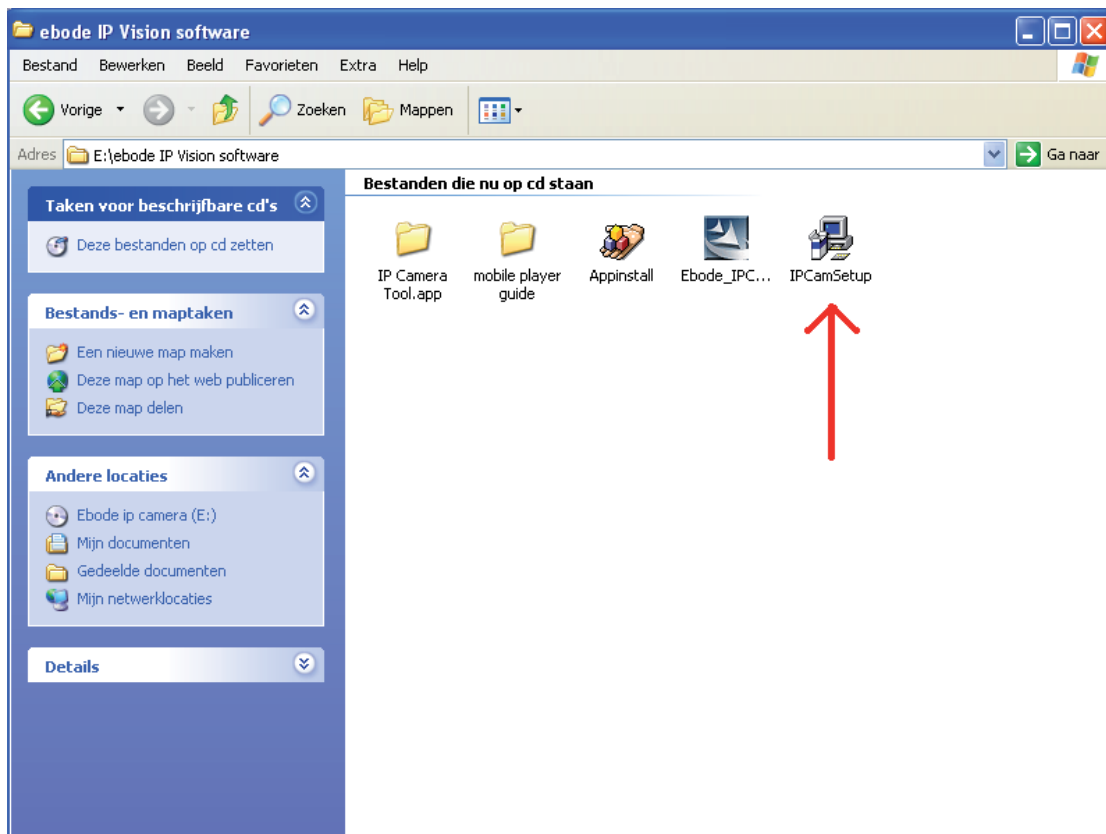
Figure 1.4

1.6 Software Installation

1. **IP Camera Tool:** Insert the CD, a popup menu might appear like shown in the picture below.
2. Select "Open Map" and click "OK"



3. Open the "ebode IP Vision Software" folder and double click "**IPCamSetup.exe**" then click **next** to complete the software installation. (Please note that on some computer systems it might take a few seconds before the "IPCamSetup" icon will appear)



In order to run smooth we will need to install the “ActiveX App” on each system we would like to use to visit the camera. The “AppInstall” file is located in the same folder as the “IPCamSetup” file from the previous steps. Please take the following steps:

4. **ActiveX**: Double click “**Appinstall.exe**”—“**Next**”—“**Install**”—“**Finish**”.



Figure 1.5

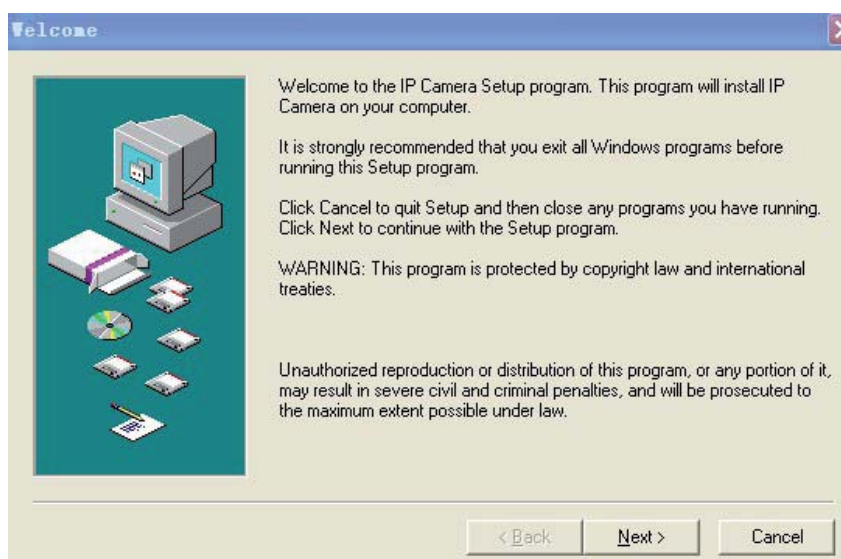
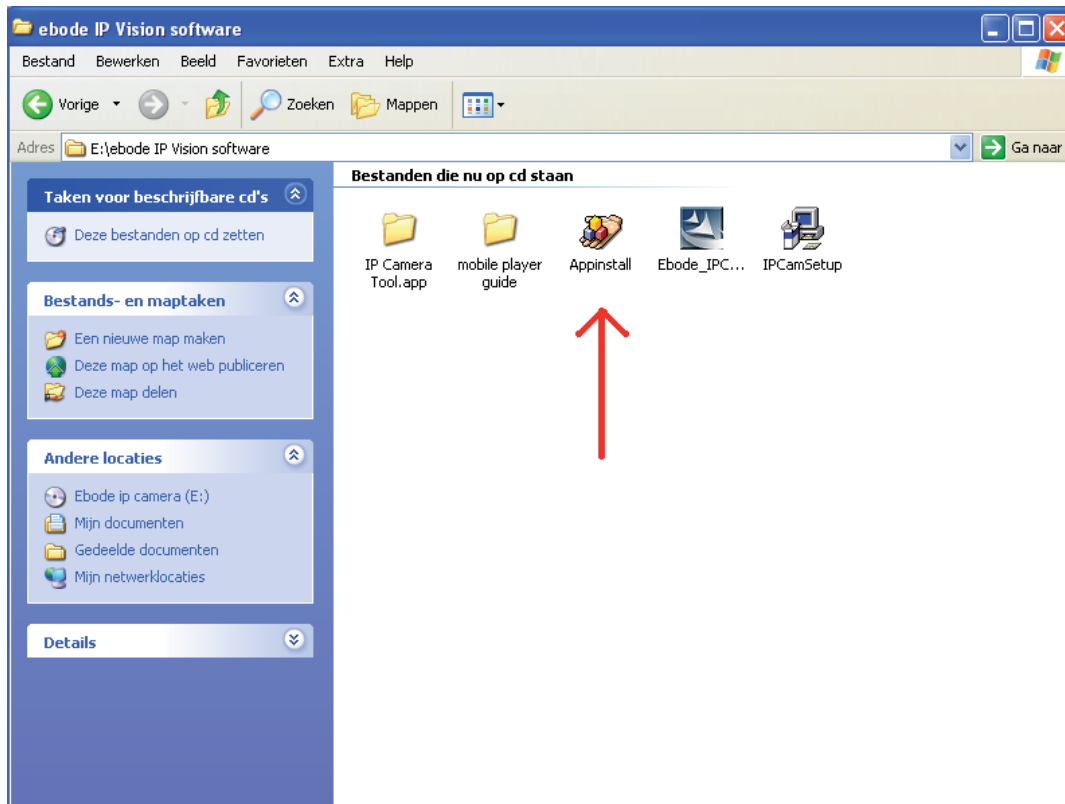


Figure 1.6

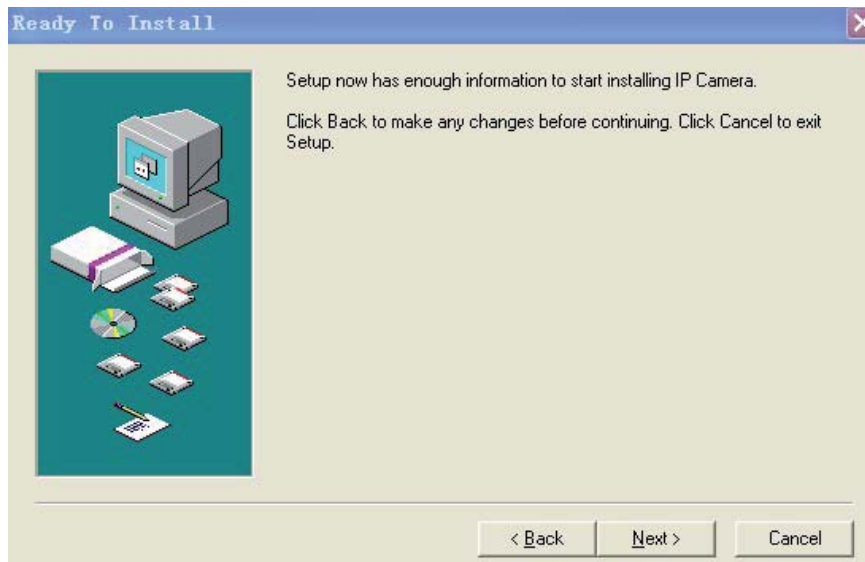


Figure 1.7

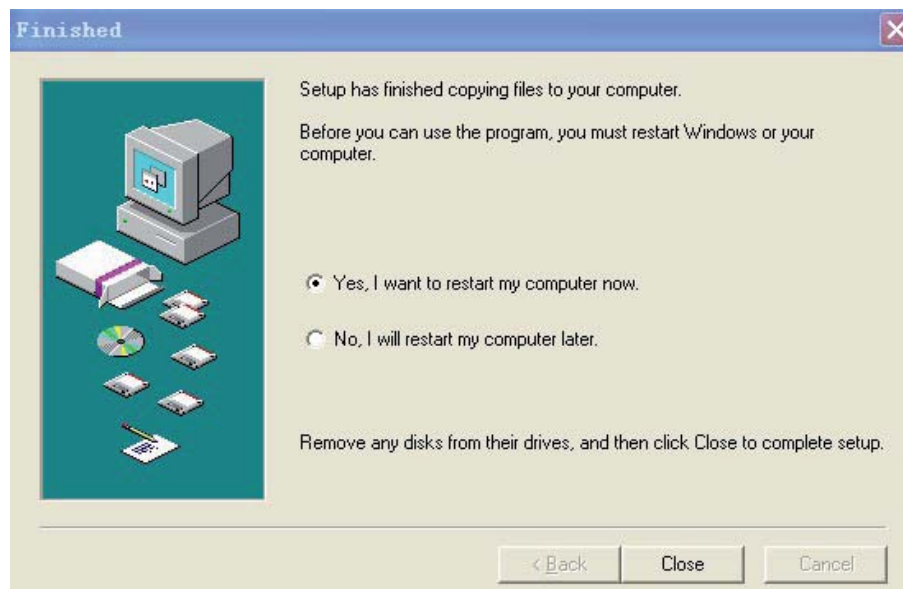


Figure 1.8



After the systems has been restarted, the icon "IP Camera Tool" will be displayed on your desktop.

CAUTION: Before installing and using the product, please read the following precautions carefully and make sure they are fully understood.

Use only the power adaptor included with the product. Use of an unauthorized power adaptor may cause damage to your IP Camera.

Do not touch the lens of the IP Camera. The optimum focus range has been set for you. If you turn the lens, it may cause incorrect focus and blurry images.

Do not turn the Pan/Tilt by force, it may cause damage to internal components of the Pan/Tilt mechanism.

For firmware upgrading or connection with an external device, refer to detailed instructions contained in the CD.

WARNING : On the first run of the program "IP Camera Tool" you might get a Windows Security Alert Popup. It will ask you to choose a setting for the firewall. Please make sure you choose the 'UNBLOCK' option. Your IP camera will not work without unblocking the firewall settings.



2.0 SOFTWARE OPERATION

2.1 IP Camera Tool

When the Device has been installed properly, you can double-click the Icon "IP Camera Tool"



and a dialog box shown in Figure 1.9 will pop up.

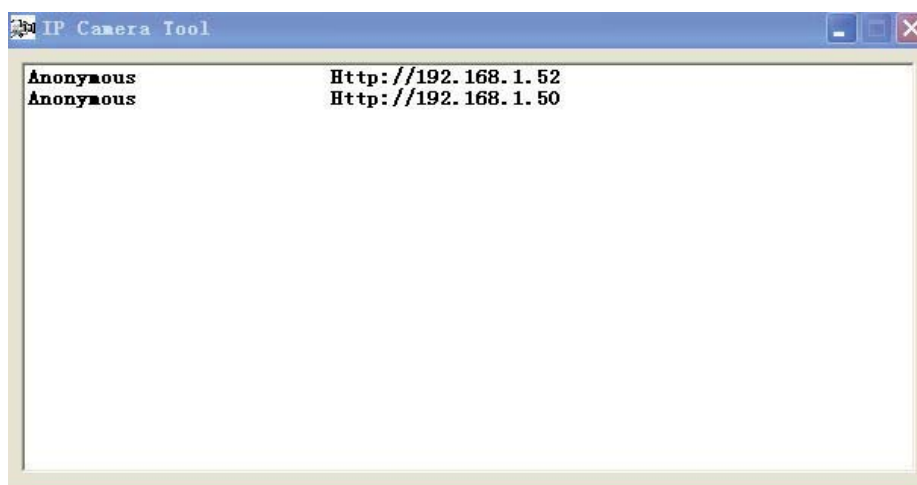


Figure 1.9

Note: The software searches IP Servers automatically over your LAN. It may take a few minutes before the IP address appears in the list. There are 3 cases:

1. No IP Cameras found within LAN. After about 1 minute search, the Result Field will show "not found IP Server" and the program shut down automatically.
2. IP Cameras have been installed within LAN. All the IP Cameras will be listed and the total number is displayed in the result field as shown in Figure 1.9.
3. The IP Cameras installed within LAN do not share the same subnet with the monitoring PC. A prompt will be shown in result field (prompt: **Subnet doesn't match, double click to change!**). Click the left mouse button to choose the prompt and click the right mouse button, choose **Network Configuration** to set the static IP address of the Camera to the same subnet as your LAN. (Figure 2.3).

NOTE: If it shows" **Subnet doesn't match, double click to change!**" you can also choose "**Obtain IP from DHCP Server**" to get a dynamic IP. (Figure 2.2). If the camera still doesn't show in the IP Camera Tool please use the Reset button on the bottom of the camera and hold it for 15 seconds with the power on. (Figure 1.3)

Please be sure your computer is on the same network as the camera !

2.1.1 Six Options

Choose the IP Camera and Click the right mouse button on that camera, there are six options: (Figure 2.0). **Basic Properties, Network Configuration, Upgrade Firmware, Refresh Camera List, Flush Arp Buffer, About IP Camera Tool.**

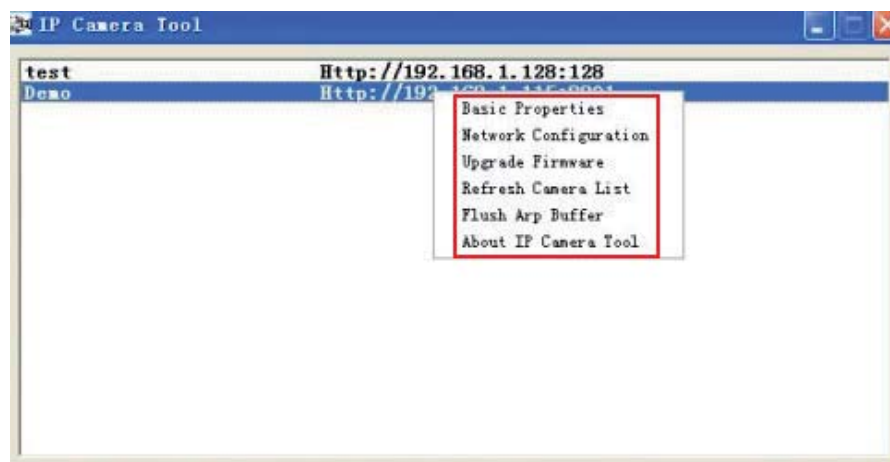


Figure 2.0

2.1.1 .1 Basic Properties

There is some device information in the Basic Properties, such as **Device ID, System Firmware Version, and Web UI Version.** (Figure 2.1).

The **Device ID** is the camera's **MAC ID**, which should be the same as shown on the sticker on the bottom of the camera. Every camera has a unique MAC ID. So if there are many IP addresses shown in the list, check the MAC ID on the bottom of the camera, so you can ensure which camera it is.

Sometimes, if there is no IP address shown on the IP Camera tool, it could be blocked by a firewall, in this case you need to add the MAC ID to the router, and give it a fixed IP or add the MAC ID as a trusted site. There are two MAC Addresses, one is the Device MAC ID, the other is the WIFI MAC ID.

WIFI MAC ID, you can find it on the sticker on the bottom of the camera, you can also login to your WIFI router, check the host status, which will show all the WIFI devices connected to your router, you can also find the IPCAM's WIFI MAC ID there.

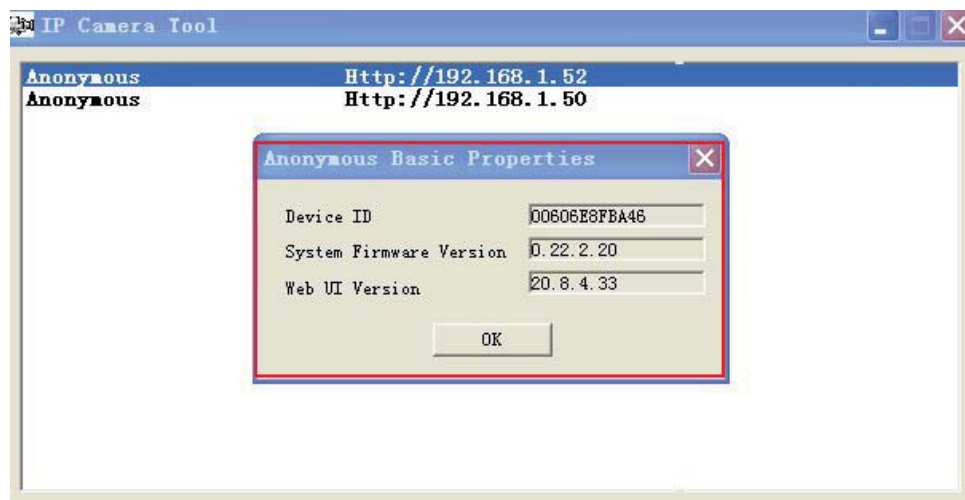


Figure 2.1

2.1.1.2 Network Configuration

Below shows how you can configure the Network parameters.



Figure 2.2

Obtain IP from DHCP server: If clicked, the device will obtain IP from DHCP server. In other words, the camera will have a dynamic IP. (Make sure the Router which the camera connects to has DHCP function and DHCP is enabled). (Figure 2.2).

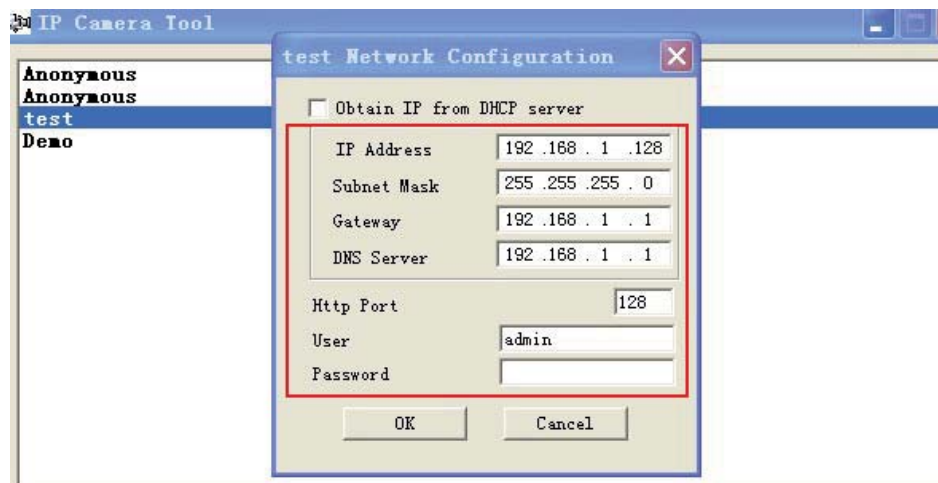


Figure 2.3

IP address: Fill in the IP address assigned and make sure it is in the same subnet as the **Gateway**, and the subnet should be the same as your computer or router. (I.e. the first three sections are the same).

Subnet Mask: The default subnet mask of the equipment is: 255.255.255.0. You can find the subnet mask from your PC or router.

Gateway: Make sure it is in the same subnet with PC's IP address .Here gateway is the LAN IP of your router.

DNS Server: IP address of IPS network provider. You can also set it to the same as the Gateway.

NOTE: You can find the **Subnet Mask**, **Gateway**, **DNS Server** from your router, or check the local connection status of your computer, to get all the parameters. Normally two DNS servers are optional.

Http Port: LAN port assigned for the equipment, default is 80. You could set another port number like 81, 801, 8001 etc.

User: Default administrator username is: **admin** (please make sure all are lowercase letters).

Password: Default password is blank, i.e. no password.

NOTE: When the prompt "subnet doesn't match, double check to change!" appears, please set the **IP Address**, **Subnet Mask**, **Gateway**, **DNS Server** once again, or enable **Obtain IP from DHCP server**.

2.1.1.3 Upgrade Firmware

Enter the correct User and Password to upgrade system Firmware and Web UI. Please **upgrade system firmware first** and **then upgrade Web UI** or it may damage the camera. (Figure 2.4).

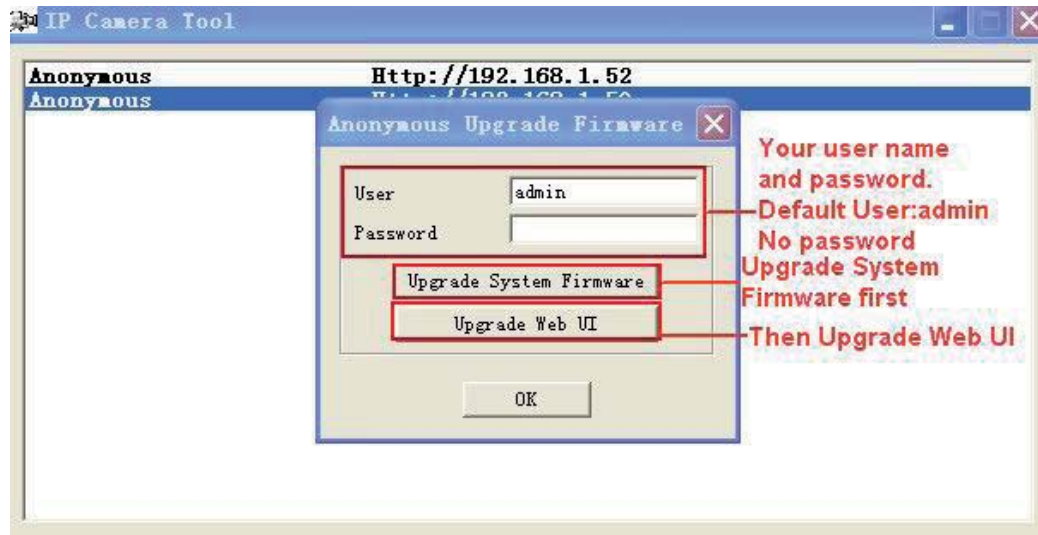


Figure 2.4

Please download the firmware package for the correct type of your camera before you upgrade. Follow the upgrade document carefully to upgrade. Please see readme first before you upgrade.

CAUTION: You should not upgrade the firmware unnecessarily. It is possible to damage the camera if a mistake is made during the upgrade. If your camera works well with the current firmware, we recommend that you don't upgrade it.

NOTE: When doing an upgrade, remember you must keep the power on, and it's best to use wired mode, connected via the network cable.

2.1.1.4 Refresh Camera List

Refresh camera list manually.

2.1.1.5 Flush Arp Buffer

When cable network and wireless network of the device are fixed IP address .There is a problem you may encounter is can search the camera IP but can't open the camera web page .you may try to use Flush Arp Buffer.

2.1.1.6 About IP Camera Tool

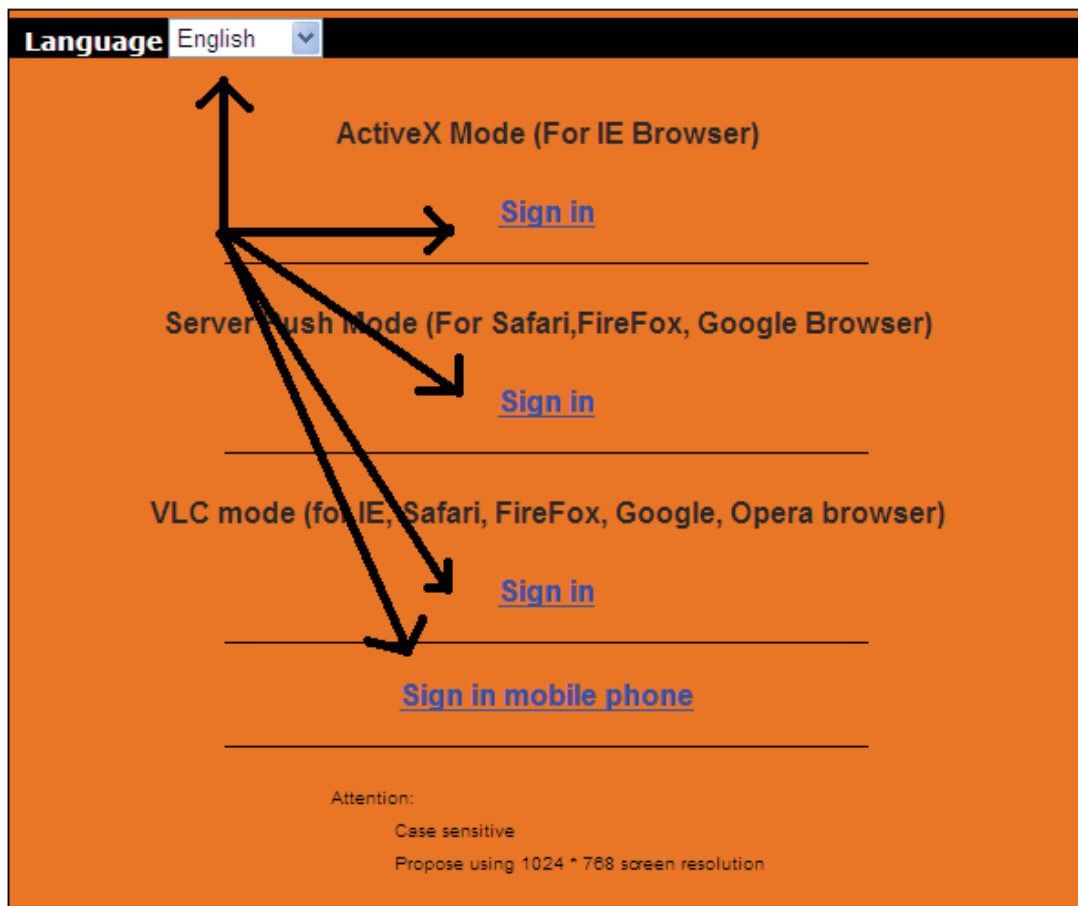
Check the IP Camera Tool Version and IP Camera ActiveX Control Version here.

2.2 Camera Login

You can access the camera through **IP Camera Tool** or **Internet Explorer (IE), Firefox, Safari, Google Chrome** or other standard browser directly.

1. Double click the IP address of the IP Camera listed (Figure 1.9). Select your language and browser you use. Note that IE Browser stands for "Internet Explorer" which is Microsoft Windows default browser.

ADVISORY: If you are going to use this manual to set up the camera, we suggest you select the English language, as all images and references in this manual are in English. After installation, you can of course select your own language to login and control the camera.



To access the camera by IE Browser directly, just type the camera's IP address, You will find the address of your camera with the Camera Tool (Figure 1.9). For example, if the camera's IP address is 192.168.1.123:



Figure 2.5

The following screen will pop up after pressing “Enter”:



Figure 2.6

The default user name is **admin, no password** (please leave password blank)

Input the correct user name and password, the Sign In interface will pop-up. There are three models to login (figure 2.7).



Figure 2.7

- (1) “Active Mode” (For IE Browser): available in Internet Explorer 6.0 or above.
- (2) “Server Push Mode”: available in Firefox, Safari, and Google Chrome browser.
- (3) “Sign in mobile phone”: available in most recent Mobile Smart Phone`s.

2.3 For IE Browser (Microsoft Windows default browser “Internet Explorer”)

Choose **Active Mode (For IE Browser)**, and sign in.



Figure 2.8

The first time you login to the camera, you might get an ActiveX prompt as in the picture above, please click the prompt and choose **Run Add-on**, refresh and login to the camera again, then will see live video, as below:

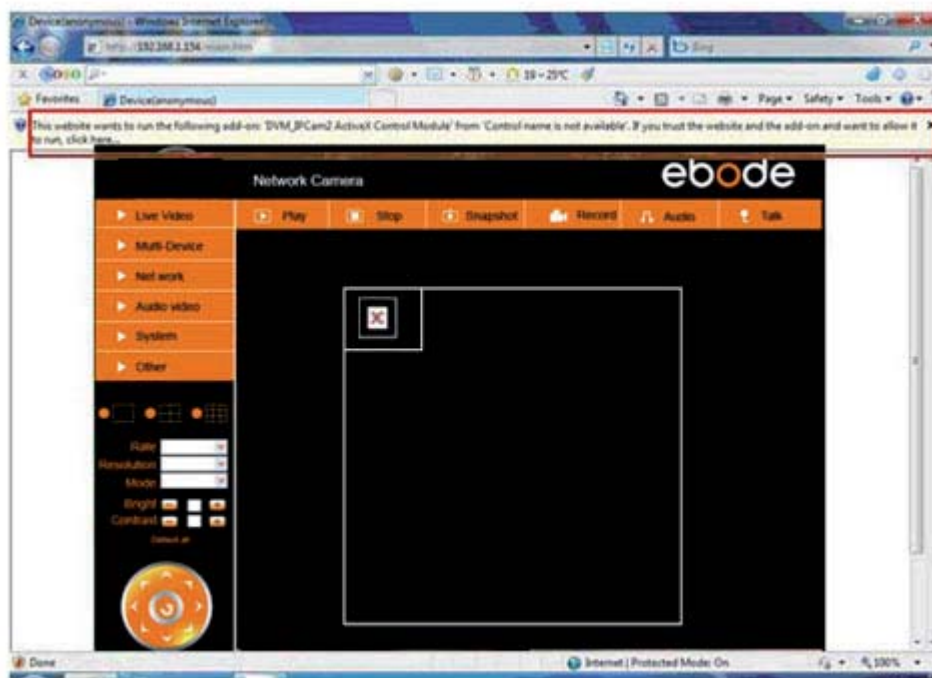


Figure 2.9

Figure 3.0



Note: If there is still no live video after you run ActiveX, and a red cross shows in the center of the screen, or even just a black screen, please try to enable the ActiveX options of IE security settings. (Did you install the ActiveX App from step 4 in chapter 1.6, Figure 1.5?)

Please take the following steps:

1. Close the firewall of your computer.
2. Change the ActiveX settings, "IE" browser > "Tool" > "Internet Options" > "Security"> "Custom Level" > "ActiveX control and Plug-ins", all the ActiveX options set to be "Enable":

Especially:

Enable: Download unsigned ActiveX controls

Enable: Initialize and script ActiveX controls not marked as safe

Enable: Run ActiveX controls and plug-ins

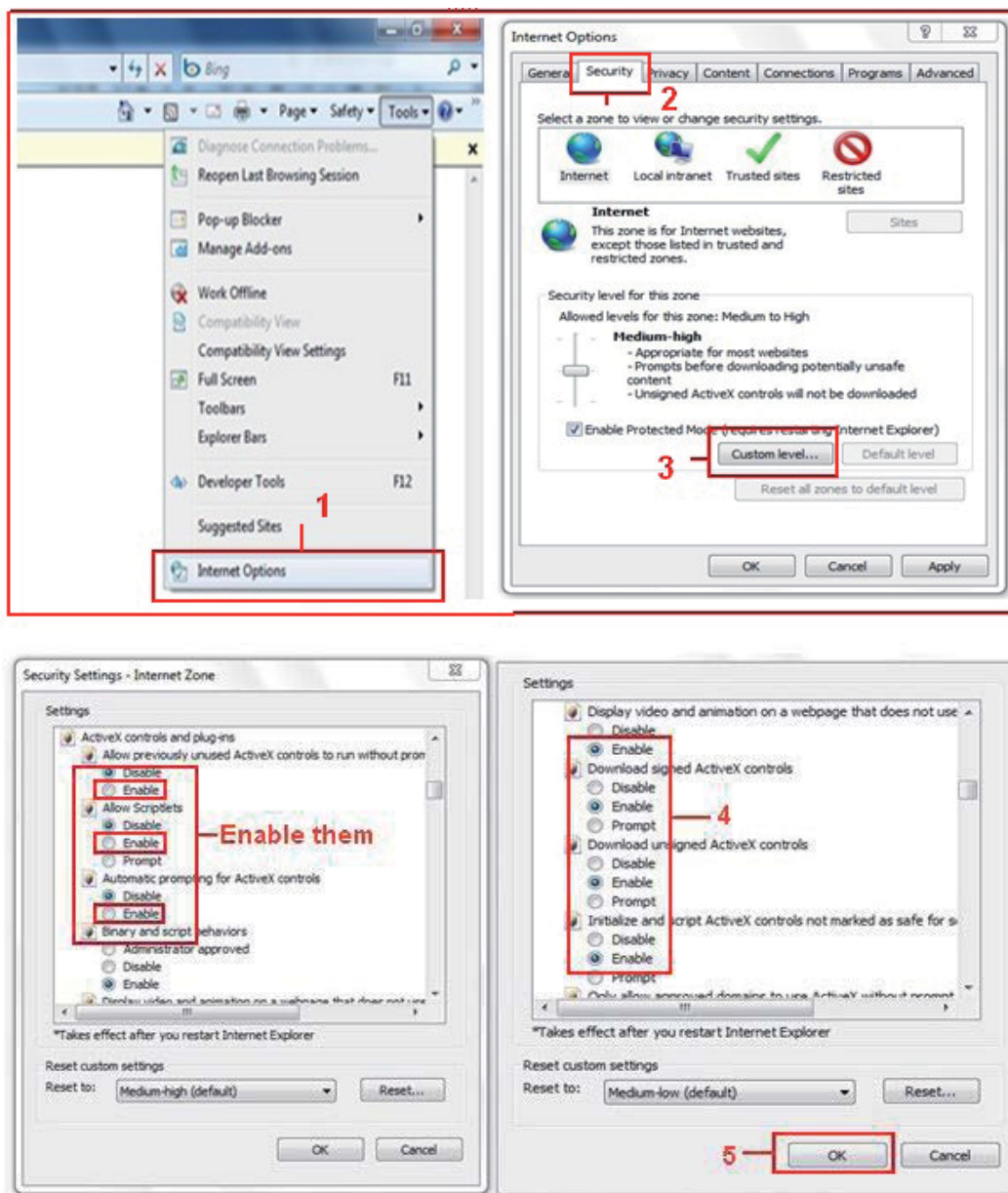
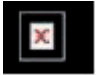



Figure 3.1

In addition: you can also click "Start" menu->"Internet Explorer", choose "Internet attributes " to enter, or via "Control Panel" ->"Internet Explorer", enter to Security setting.

If you allowed the ActiveX to run, but still could not see live video, only a Red Cross  in the center of the video, and the device status light changed to yellow color  not green, please change to another port number. Don't use port 80, use another port such as 128, 1008 etc.

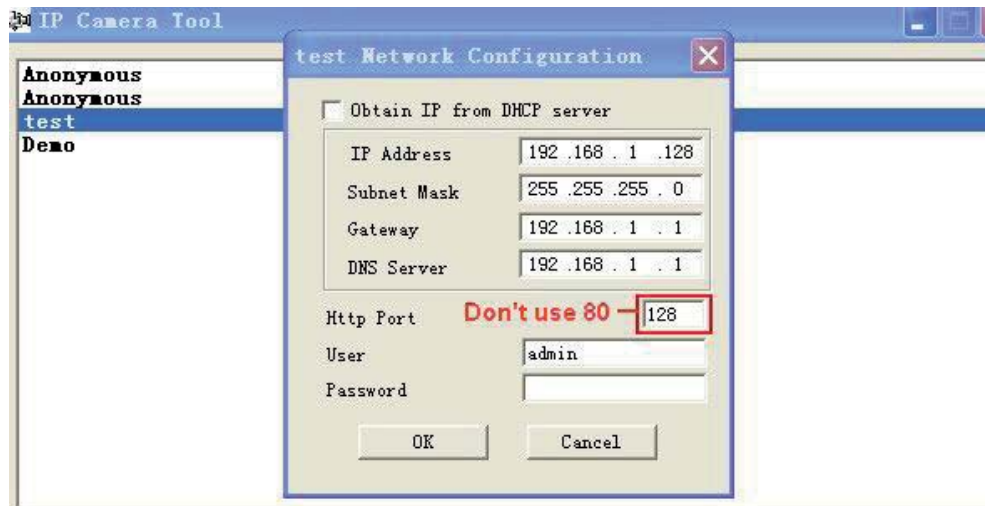


Figure 3.2

NOTE: Make sure that your firewall or anti-virus software doesn't block the software or ActiveX. If you couldn't see live video, please close your firewall or anti-virus software, and try again.

2.4 For Safari, Firefox, Google Browser

Choose **Server Push Mode (For Safari, Firefox, Google Browser)**, and sign in.

Server Push Mode doesn't support ActiveX, so some functions are not available, such as **Play, Stop, Record, Audio, Talk** etc. if you want to use these functions, please use IE browser.



Figure 3.3

2.5 For Mobile Phone

Choose **Sign in mobile phone**, and sign in.

Mobile phone doesn't support ActiveX, so only some basic functions are available in this mode. It supports iPhone, Smart phone, 3G phone, etc. Normally, if the mobile phone supports network video, then it should work with your IP Camera.

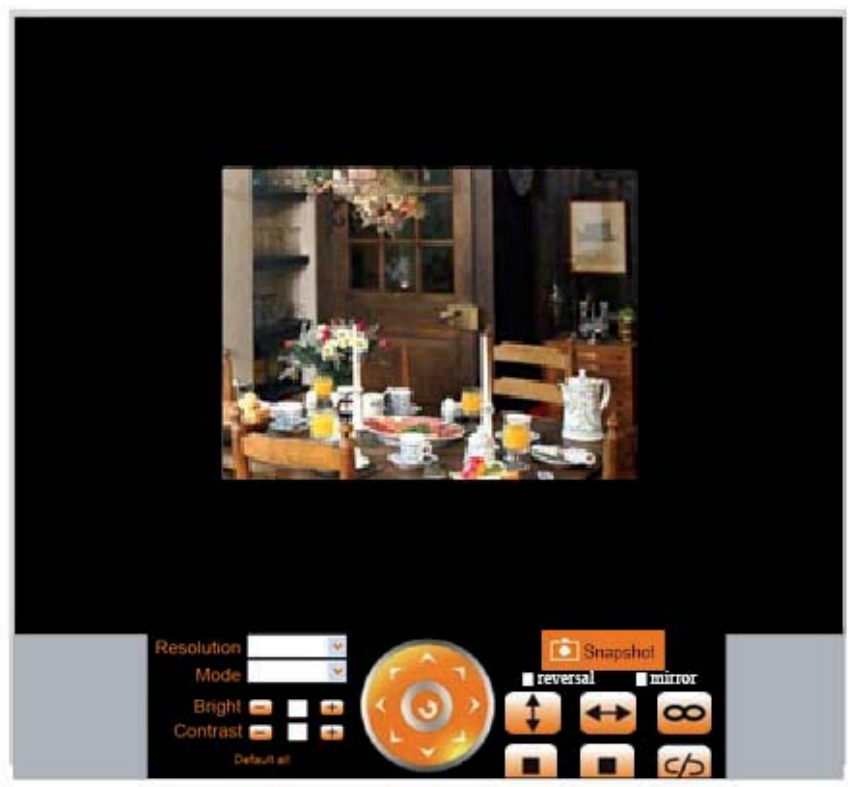


Figure 3.4

2.6 ActiveX Mode (For Internet Explorer)

Login to the camera in ActiveX mode, the main User Interface is as below:

NOTE: There are 3 levels of users, **Visitor**, **Operator**, **Administrator**, if you login with different users, the use authority is different. (See 3.11 User Settings, Figure 8.5).

2.7 For Visitor

When you login as Visitor, you can enter the IP Camera for visitor. Visitor is the lowest level with only some operation available.



Figure 3.5

Channels:

The Internet Explorer software supports 9 channels. Click



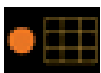
to get different windows.



Click this one to view the main channel of the camera you login to.



Click this one to view 4 Channels of cameras that are connected, from CH1 to CH4.



Click this one to view 9 Channels of cameras that are connected, from CH1 to CH9.

NOTE: If you want to view 4/9 channels, you should set the Multi-Device first (See 3.1 Multi-Device Settings).

Status of Channels:

There are 9 icons  at the bottom of the UI which show the status of each channel of the camera.



Grey color, means there is no device connected to the main device for this channel.



Green color, means the device is connected for this channel, and it works well.



Red color, means the device for this channel is recording.



Yellow color, means this channel is set in multi-device already, but it fails to connect to the main device.



OSD Settings:



Figure 3.6

OSD: Means "On-Screen Display", click "**Audio video**" > "**OSD**", set display date and time on the video.

Disabled: Clicking this one means clear the OSD.

Color: Can set the OSD text color as **black, yellow, red, white, blue** etc.

Add time stamp on record: if you click this, there will be time OSD on record video files.



Figure 3.7

Rate and Resolution:

Rate: Set video frame here, from “full-speed to 1fp/5s”. (Figure 3.8).

Resolution: Set the resolution to be 160*120/ VGA (640*480)/ QVGA (320*240). (Figure 3.9).

NOTE: When doing recording, Rate and Resolution parameter settings is very helpful for getting smaller sized record files, lower the parameter to get a smaller file.

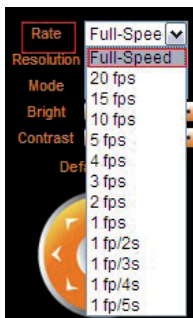


Figure 3.8

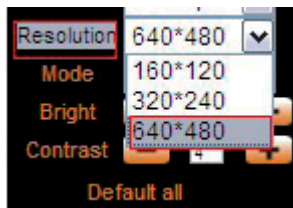


Figure 3.9

TOP Menu:

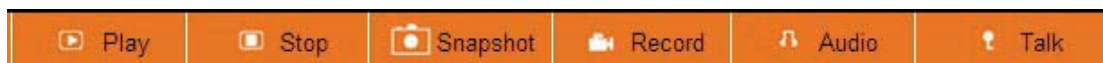


Figure 4.0

Click to get live video. When you want to get back to live video from other menus, just click it. Only under live video, you can do the operation on the right side, such as **play, stop, snapshot** etc.



Click to get into play mode, when you click stop icon, the video will be stopped, then if you click play icon, it will show the video again.



Click to stop the live video. You can click play icon if you want to see live video again.



Click to get snapshot. It will show the date and time of the snapshot you get, if you save it, you will find the snapshot file named by “snapshot_MAC ID_date_time”.



Click to start record manually, and the icon will change to red color, click it again, it will stop recording. The record file will be saved to the folder you set. (Figure 10.8 - Figure 11.0).



Click to collect the sound from the camera, you will hear the sound from the camera through the speaker in the computer which you are using. Your IP Camera has a built-in microphone, when you click it to start work, the icon will change to red color, click it again, will stop the audio function.



Click to start the talk function, (you'll need to plug a microphone into your computer if it doesn't have one built-in). When you talk into the microphone in your computer, the sound will come out from the built-in speaker in the camera, people beside the camera will hear the sound. If you connect an external speaker to the audio output jack on the back of the camera (Figure 1.2), you will get better sound. Click it once to start, the icon will change to red color, click it again to stop talk function.

NOTE: For visitor, if you click other menus which visitors don't have the right to operate, there will be a pop-up for the login interface (Figure 2.6), please input the user name / password for at least 3 times to login again.

2.8 For Operator

When you login as Operator, you can enter the IP Camera for Operator.

For operator, it not only supports all the functions for Visitor, but also supports these functions below:

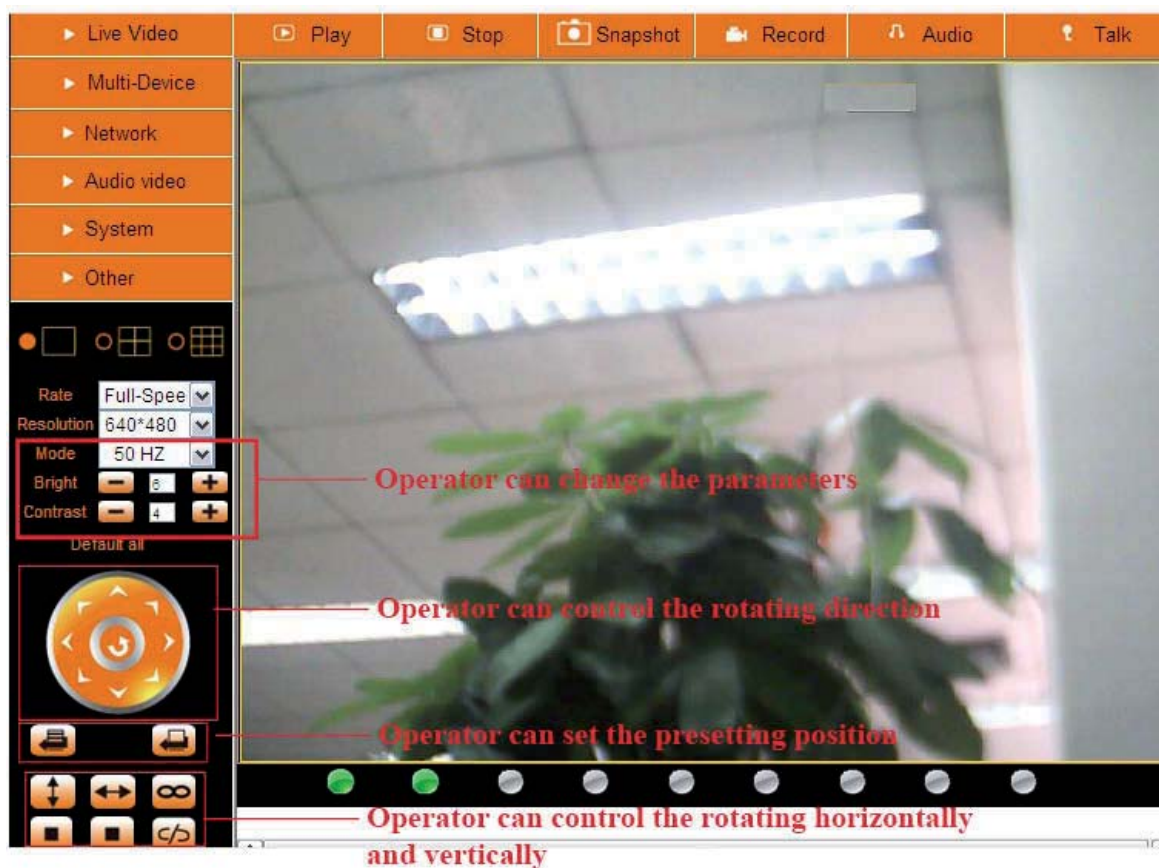


Figure 4.1

Audio Video Settings



Figure 4.2

Audio buffer: Click this icon, it will show five numbers, which means 1/2/3/4/5 seconds buffer of audio.

Reversal: Click this icon to reverse (flip) the image. Click again to go back to normal.

Mirror: Click this icon to see a mirror image. Click again to go back to normal.

NOTE: You can choose Reversal and Mirror function when you set up the camera in a special position (upside down for example).

Mode, Bright, Contrast Settings

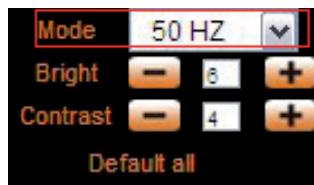


Figure 4.3

Mode: This mode is optional, 50HZ/60HZ for the users who use 50HZ/60HZ frequency, outdoor for users who want to use the camera to monitor toward an outdoor environment.

Bright: Set the parameters to adjust the image quality of the video. Click   to adjust the value.

Contrast: Set the parameters to adjust the image quality of the video. Click   to adjust the value.

Default all: Click it to set all the parameters back to the factory setting.

NOTE: If you login to the camera, and there is no video displayed, or the parameter of bright/contrast is blank, you can try to click “default all” to set the parameters back to the factory setting to get live video.

Pan/Tilt Control



Figure 4.4



Click this icon, the camera will pan/tilt, and then stop at the center. Normally it will rotate 1 circle.



Click this icon, camera will move up, you can click one by one or hold it to control the movement.



Click this icon, camera will move down, you can click one by one or hold it to control the movement.

NOTE: It is the same operation as left, right, up-left, up-right, down-left, down-right etc.



Click this icon, camera will rotate up and down, i.e., vertical tilt, click  to stop it.



Click this icon, camera will rotate left and right, i.e., horizontal pan, click  to stop it.



Click this icon, IO output Switch ON. Click  to set it OFF.

RECOMMENDATION:

Image PT function: Image Pan/Tilt (PT) function is recommended, you can control the camera direction on the live video. Double click the right mouse on the live video to enable this function, and you will see a white & transparent arrow on the live video, click left mouse to control direction, eight directions are available. This is very convenient for Pan/Tilt operation. Double click right mouse again to exit.

Preset Settings

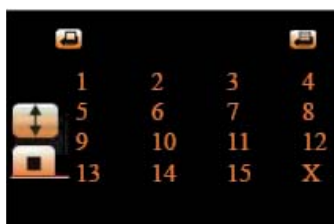




Figure 4.5



Set Preset Position. It supports 15 preset positions. To control the camera's rotation to a preset position, click **Set Preset Position** button  it will pop-up a dialog frame (Figure 4.5), choose the number (1-15) you want to set it to.

NOTE: if you set different positions with the same number, the camera will record the last position setting only.



Call Preset Position. It supports 15 preset positions. If you want to monitor an important area quickly and precisely, just click **Call Preset Position** button  it will pop-up a dialog frame (Figure 4.5), choose the number, then the camera will rotate to the preset area automatically. If you want to use **Call Preset Position**, you have to **Set Preset Position** first.

NOTE: For Operator, if you click other menus which operator doesn't have the right to operate, there will be a pop-up of login interface (Figure 2.6), please input the user name / password for at least 3 times to login again.

2.9 For Administrator (For details see Settings as Administrator 3.1 - 3.22).

3.0 SETTINGS AS ADMINISTRATOR

When you login as Administrator, you can enter the IP Camera for Administrator. Administrator supports all the settings and operations of the camera.

There are some special functions only for administrator as below:

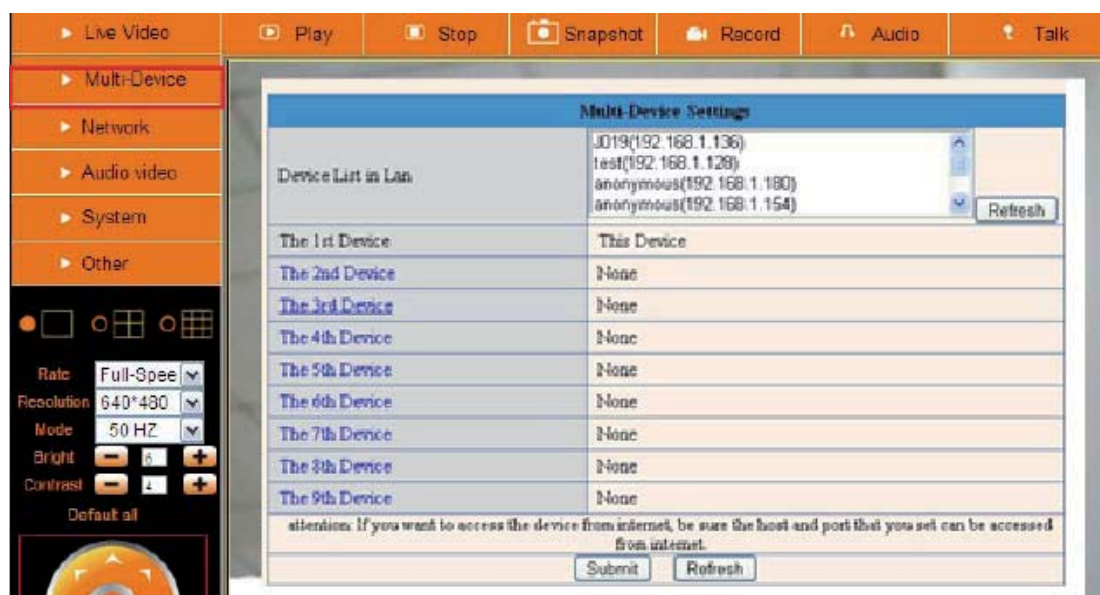
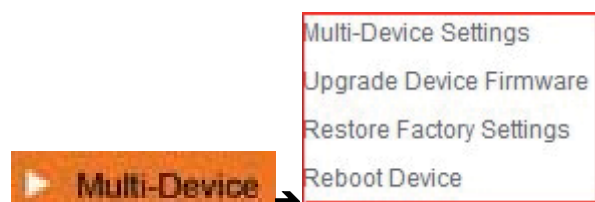


Figure 4.6

3.1 Multi-Device Settings



Multi-Device Settings

This camera can support max. 9 device channels at the same time.

3.1.1 Set Multi-Device in LAN

In the Multi-Device Settings page, you can see all devices searched in LAN. The 1st device is the default one. You can add more cameras listed in LAN for monitoring. This web software supports up to 9 IP Cameras online simultaneously.

Click **The 2nd Device** and click the item in the **Device List in Lan**, it will fill the Alias, Host, Http Port automatically, then input the correct user name and password, click **Add**. Set more devices in the same way, after you're done, click **Submit**.

Multi-Device Settings	
Device List in Lan	<div> <div>anonymous(192.168.1.38)</div> <div>anonymous(192.168.1.53)</div> <div>test(192.168.1.128)</div> <div>Demo (192.168.1.115)</div> </div> <div>Refresh</div>
The 1st Device	This Device
The 2nd Device	None
The 3rd Device	None
	<div> <div>Alias</div> <div>Demo</div> </div> <div> <div>Host</div> <div>192.168.1.115</div> </div> <div> <div>Http Port</div> <div>8901</div> </div> <div> <div>User</div> <div>admin</div> </div> <div> <div>Password</div> <div></div> </div>
	<div> <div>Add</div> <div>Remove</div> </div>
The 4th Device	None
The 5th Device	None
The 6th Device	None
The 7th Device	None
The 8th Device	None
The 9th Device	None
attention: If you want to access the device from internet, be sure the host and port that you set can be accessed from internet.	
6.Submit to finish	<div> <div>Submit</div> <div>Refresh</div> </div>

Figure 4.7

Click **Live Video** and then select  to see four channels, or click  to see nine channels.

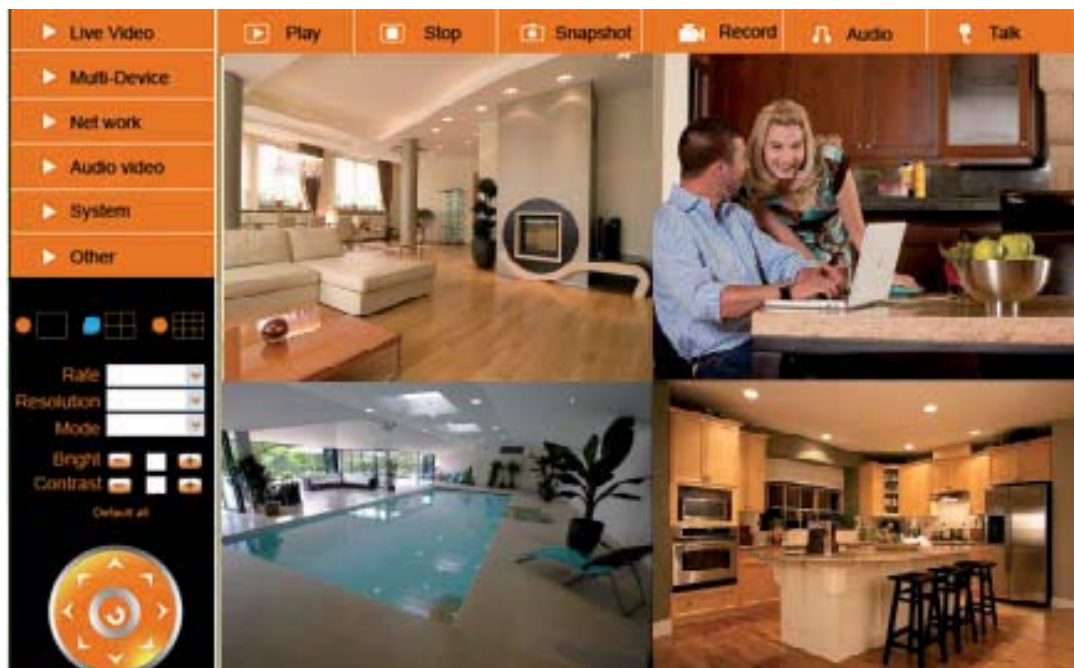


Figure 4.8

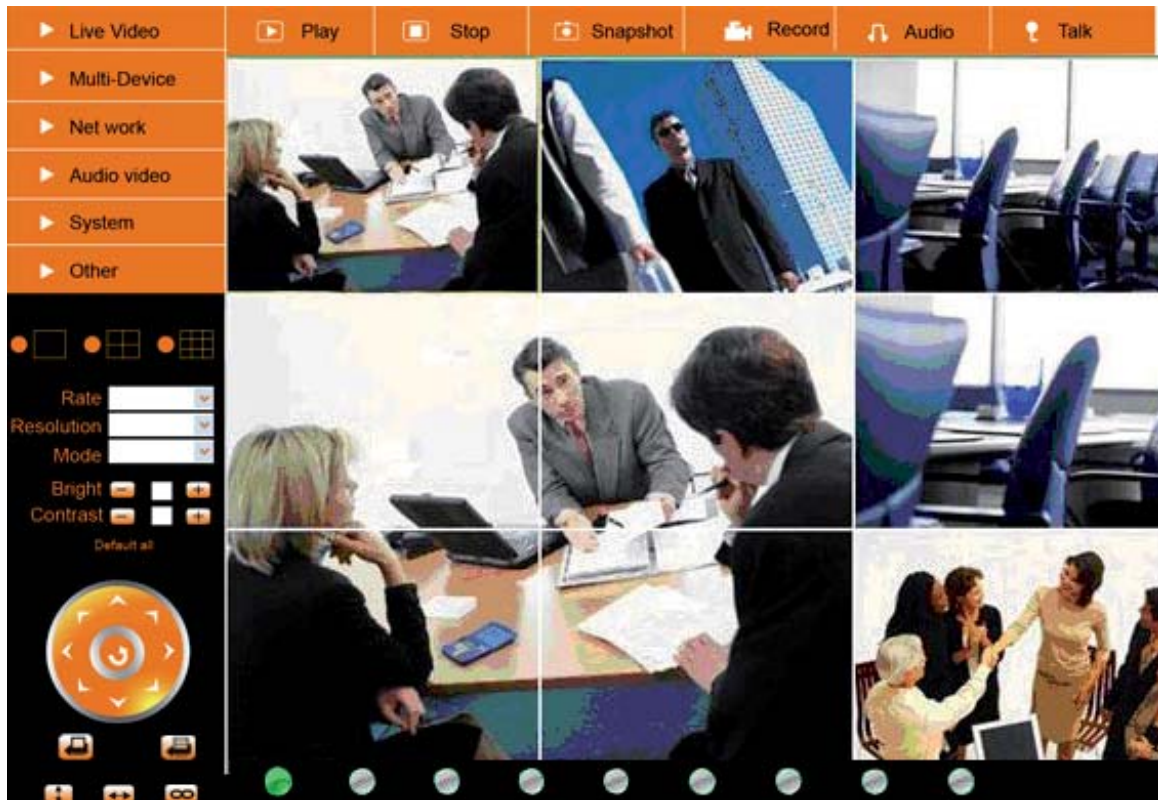


Figure 4.9

3.1.2 Set Multi-Device for WAN

If you want to view cameras from the internet, you have to add these devices by DDNS domain name. Make sure all these cameras you want to add have been set DDNS successfully. (View 3.7 **DDNS Service Settings**) And also these cameras work well with DDNS.

Login to the first camera by DDNS domain name and port, this camera will be as the host camera.

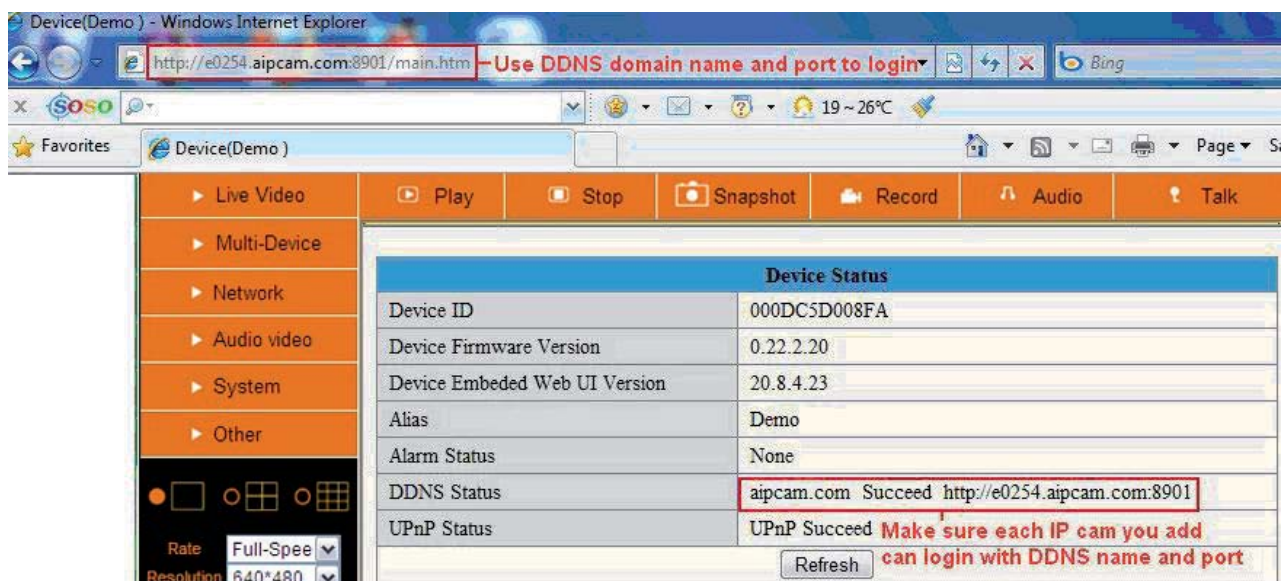


Figure 5.0

Click **Multi-Device**, select **Multi-Device Settings**. Choose **the 2nd Device**; fill in the 2nd camera's Alias, Host, Http Port, User, Password, click **Add**. Set more devices in the same way, after all done, click **Submit**.

NOTE: The Alias is optional; you can set the alias as you wish. The Host must be the camera's DDNS domain name, and without "**http://**", it's not the LAN IP address. If you have several cameras, you can use the same DDNS domain name, just set different port number for each different camera.

Multi-Device Settings	
Device List in Lan	<div> <div>anonymous(192.168.1.128)</div> <div>anonymous(192.168.1.180)</div> <div>Demo (192.168.1.113)</div> <div>J019(192.168.1.136)</div> </div> <div>Refresh</div>
The 1st Device	This Device
The 2nd Device -1.Click it	demo1(e0254.aipcam.com)
Alias	demo1
Host	e0254.aipcam.com
Http Port	8901
User	admin
Password	
6.Add to finish	<div>Add</div> <div>Remove</div>
The 3rd Device	None
The 4th Device	None
The 5th Device	None
The 6th Device	None
The 7th Device	None
The 8th Device	None
The 9th Device	None
attention: If you want to access the device from internet, be sure the host and port that you set can be accessed from internet.	
<div>Submit</div> <div>Refresh</div>	

Figure 5.1

Note: Add the other camera in the same way, Click **submit** to add all of them.

Multi-Device Settings	
Device List in Lan	<div> anonymous(192.168.1.128) anonymous(192.168.1.129) anonymous(192.168.1.115) Demo(192.168.1.113) </div> <div>Refresh</div>
The 1st Device	This Device
The 2nd Device	Test(e0254.aipcam.com)
The 3rd Device	Anonymous(ipcamera.3322.org)
The 4th Device	Demon(demon.dyndns.org)
The 5th Device	None
The 6th Device	None
The 7th Device	None
The 8th Device	None
The 9th Device	None
attention: If you want to access the device from internet, be sure the host and port that you set can be accessed from internet.	
<div> <div>Submit</div> <div>Refresh</div> </div> <div>Click Submit after finish all settings</div>	

Figure 5.2

Click **Live Video** and then select  to see four channels, or click  to see nine channels.

In this case, you can see all the cameras from a remote position by internet, for example, if you are on a business trip, you can use the first camera's (Host camera) DDNS to view all the devices via the internet.

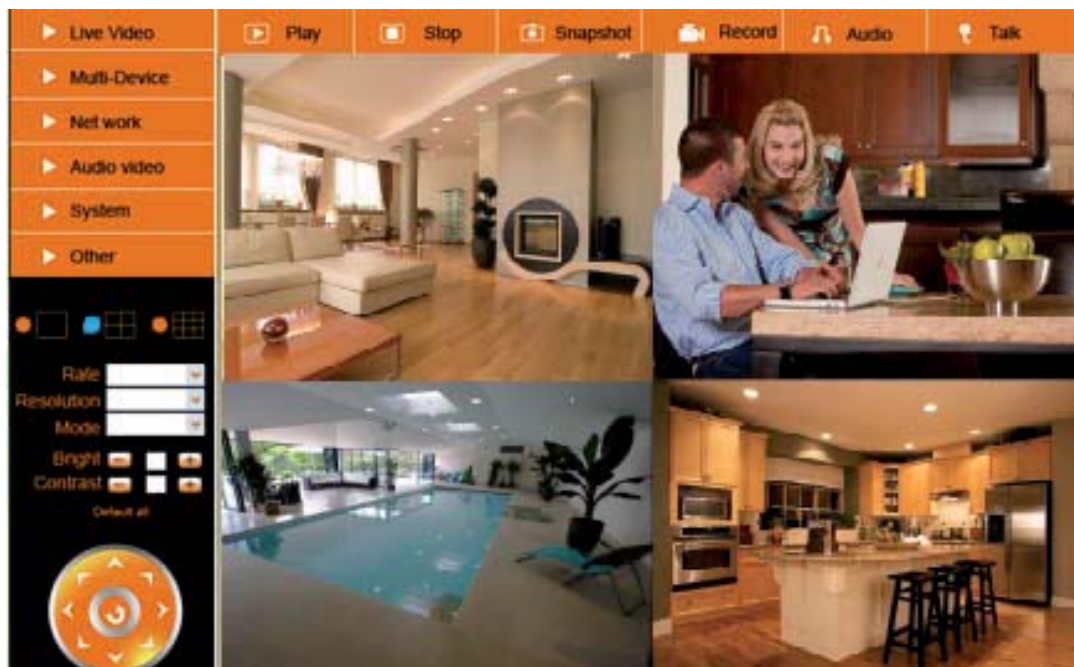


Figure 5.3

3.1.3 Upgrade Device Firmware

If you want to upgrade the camera, please upgrade Device Firmware first, then upgrade Web UI. Click **Browse** and choose correct bin file, then click **Submit** to do upgrading.

NOTE: Before doing an upgrade via Browser, please make sure the IP Camera Tool of your computer could find the camera's IP.

Attention: Please keep the power on during upgrading, and it's better to use wired mode via network cable. Please don't upgrade unnecessarily, wrong operation or incorrect upgrade bin file can damage the camera.



Figure 5.4

3.1.4 Restore Factory Settings

Click **Restore Factory Settings**, will pop-up a prompt, select **OK**, all the parameter will be returned to factory settings, and the device will reboot.

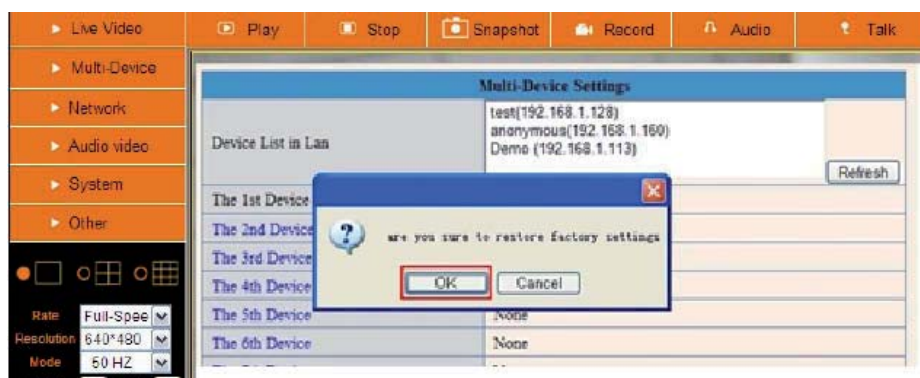


Figure 5.5

3.1.5 Reboot Device

Click **Reboot the device**, will pop-up a prompt, select **OK**, then the device will reboot

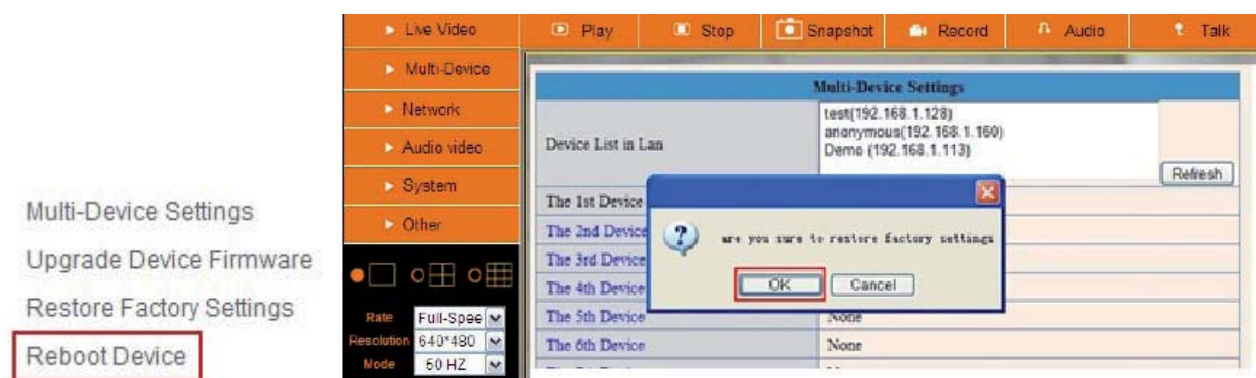
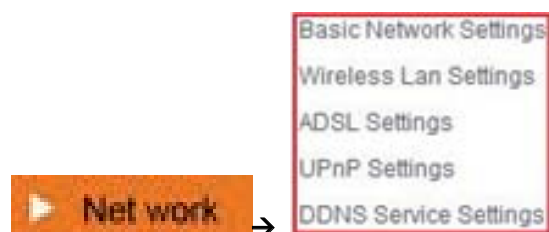


Figure 5.6

3.2 Network Settings

Click **Network**, will pop-up the prompt as below:



3.3 Basic Network Settings

Here you can fix the camera's IP address; i.e., set the static IP address of the camera manually.

You can also do these settings from IP Camera Tool. (Figure 2.3).

There are some good reasons to give the camera a static IP. The factory default setting is DHCP, this means that the network router will give the Camera an IP address itself for easy setup. The problem is that after a camera or network power loss the router may decide to give the camera a different IP address than the last time. If you want to login to the camera not using the IP Tool you don't know the camera's (new) IP address.

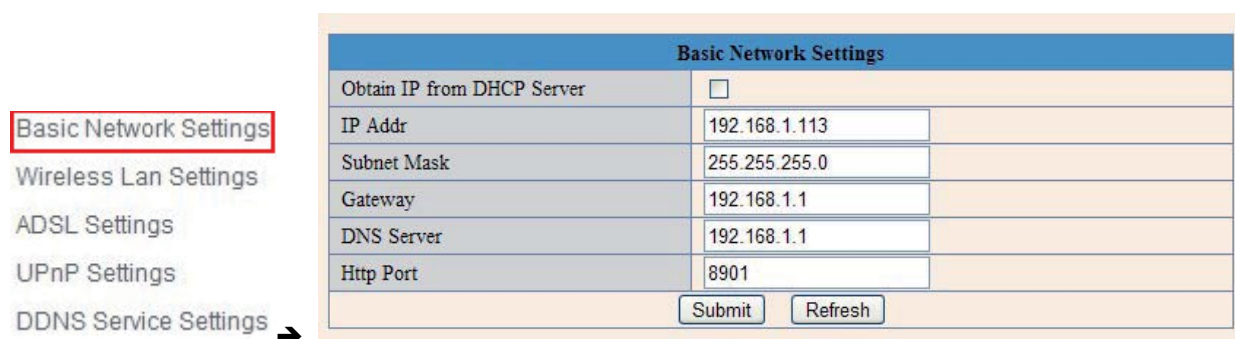
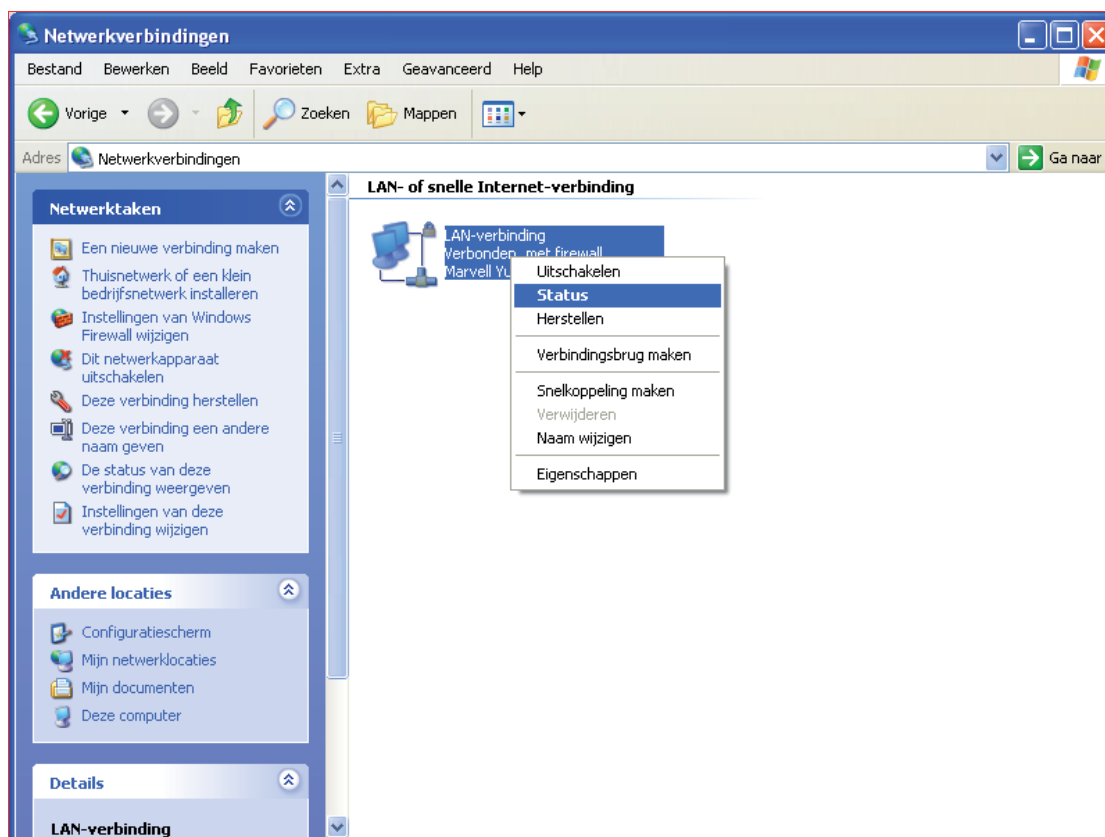



Figure 5.7

If you don't know the Subnet Mask, Gateway, DNS Server. Please check the Local Area Connection Status of your computer; it contains all this information, steps as below:

1. Control Panel → Network Connections → Local Area Connections (Lan) → Support → Details



2. Find the local connection icon  , because you might see more than one icon, left click it, choose **Support** → **Details**

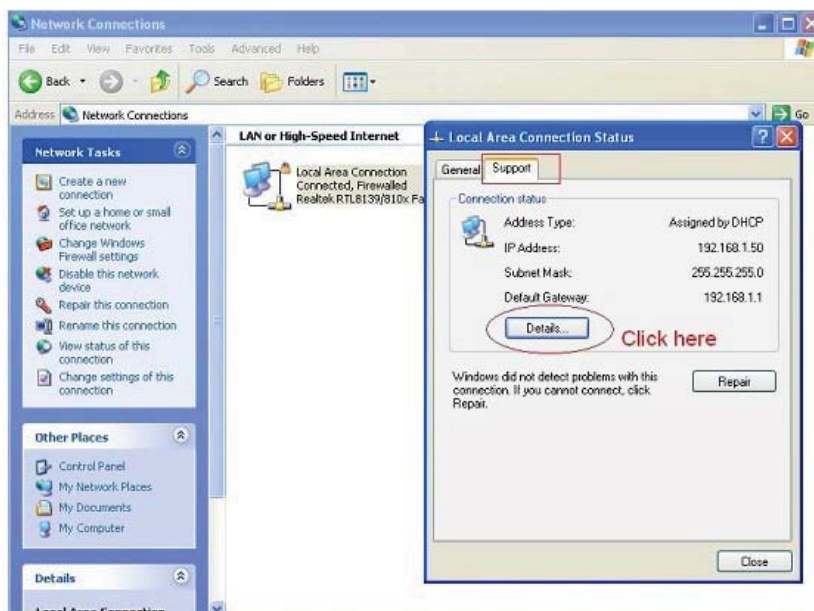


Figure 5.8

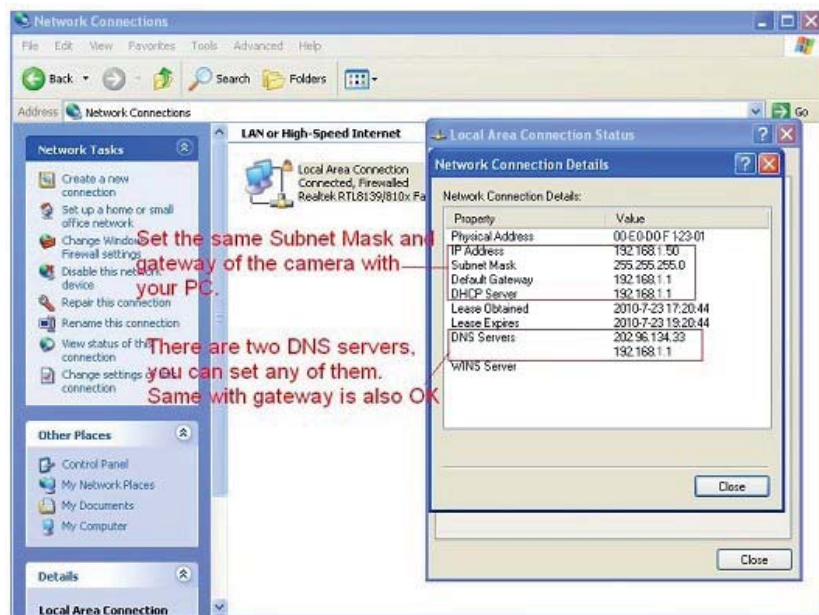


Figure 5.9

If you don't know the DNS Server, you can set it the same as Gateway.

If the router supports DHCP function, you can choose "Obtain IP from DHCP Server" to get dynamic IP.

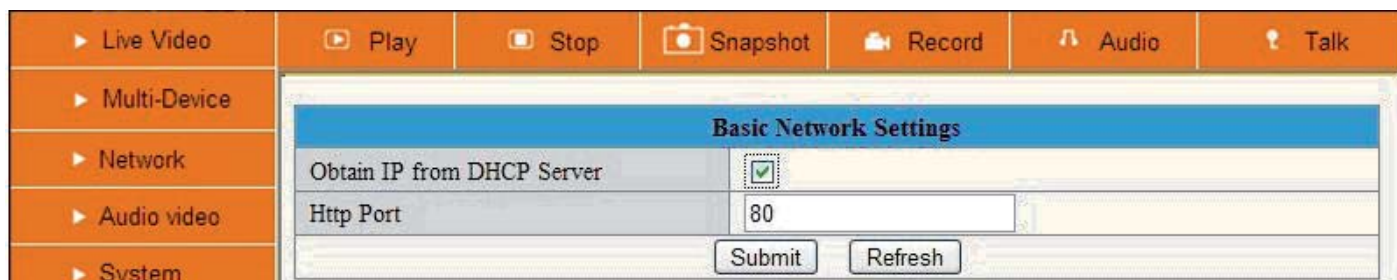


Figure 6.0

Http Port: In most cases your Internet Service Provider blocks this port (80), you may change it to another port number such as 85 or 86 or any number above 80. Make sure that if you have more than one camera it might be useful to give each camera a unique port number, but it's not necessary to do this.

3.4 Wireless LAN Settings

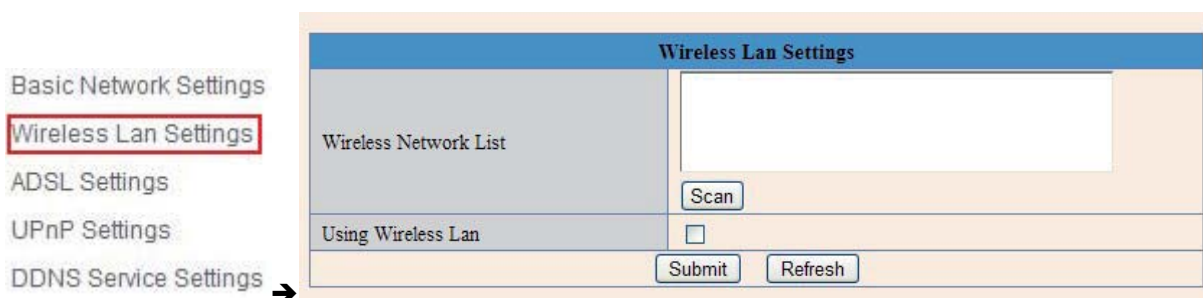


Figure 6.1

1. Make sure the router is a wireless router.

2. Make sure the Wi-Fi antenna is installed.

3. Determine whether there is encryption on the WLAN of router, if there is encryption, note the key somewhere as we need it in the following steps.

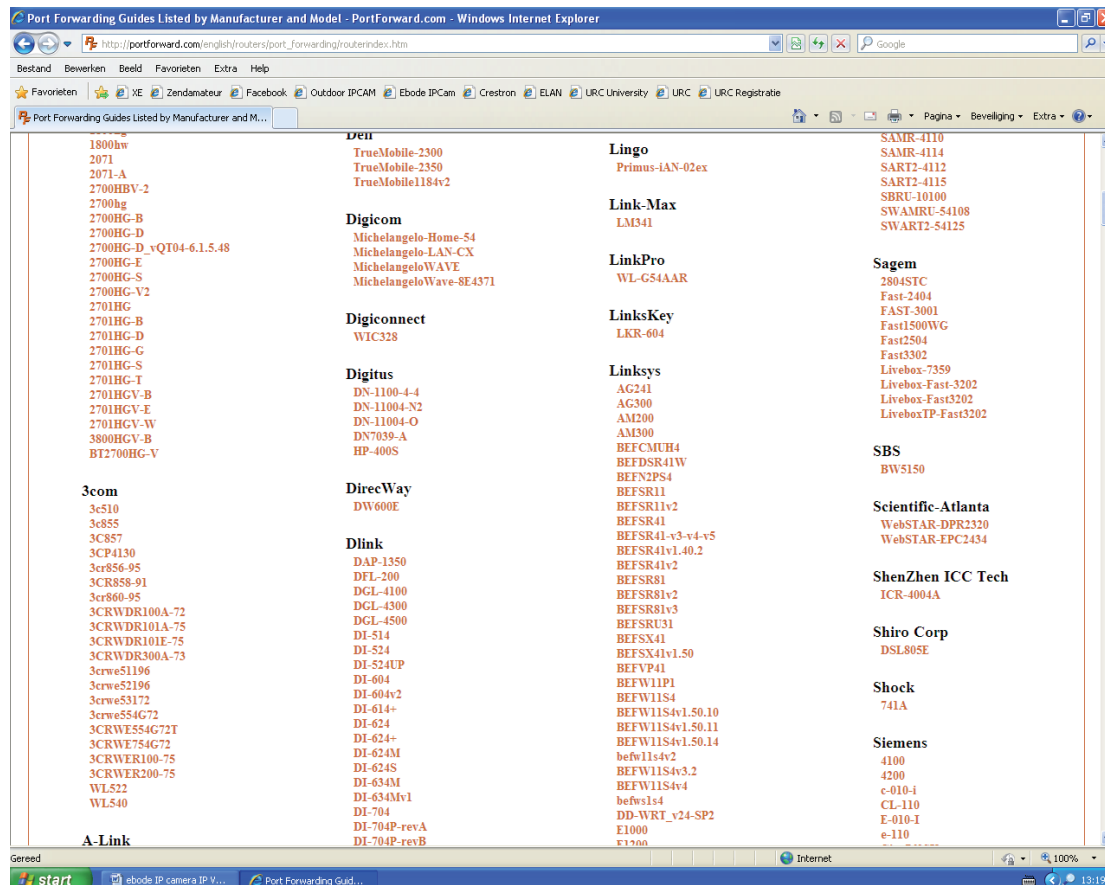
Extra information:

Encryption is another word for password and security of the wireless network, most routers will have encryption these days (and should be) so other people cannot brake in to your network. Some routers have a sticker on the bottom with the factory username and password, other ones don't have a password, and the password can also be set by the user or mechanic. There is a very handy website with allot of router brand information like default IP address, default username and password etc. Please note we only refer to this website, we do not maintain or support it. The website is: <http://portforward.com/> Click "Router List" and find your brand and type to find more handy details about your router if you can't find them anywhere else.

In the next screenshots we take a Linksys router as an example, here Portforward.com shows the default username and password as well as the default IP address to visit the router settings menu.

Please note that Portforward.com is a website designed to tell you how to forward ports in your router. Information may vary from type to type of routers. Lets proceed shall we?





PortForward.com - Automatically forward your ports with PFConfig. - Windows Internet Explorer

http://portforward.com/english/routers/port_forwarding/routerindex.htm

Bestand Bewerken Beeld Favoireten Extra Help

Favorieten IE Zendator Facebook Outdoor IPCAM Ebode IPCam Creston ELAN URC University URC URC Registratie

PortForward.com - Automatically forward your ports

Click here to skip this advertisement...

Internet Gaming - Network Techs - Home Networks - You Need

PFCONFIG
PORT FORWARDING MADE EASY
Easy Setup of Your Router's Port Forwards!

Guaranteed to world 11 PFConfig does not setup your forwards, simply contact our support department and we'll do it for you.

Take the frustration out of forwarding your router ports with PFConfig. Any application requiring port forwarding can be set up in minutes. Just pick your program from the list and press the "Update Router" button.

PFCONFIG FEATURES

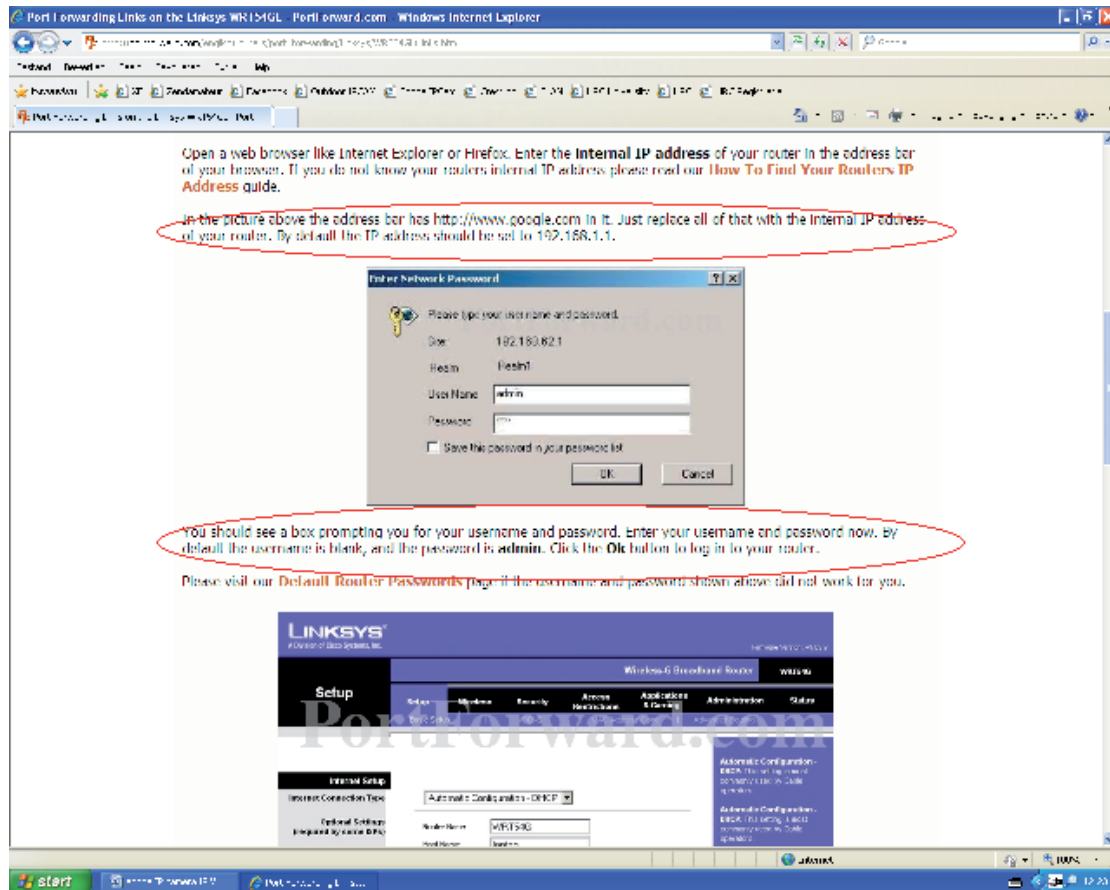
- 100% Guaranteed or we'll do it for you! Our support department knows how to forward your ports. [Read more](#)
- Configure your router's port forwarding section automatically. [Read more](#)
- Increase security by forwarding ports when you need them, and prevent forwarding when you do not. [Read more](#)
- Optimize your router's available memory for faster and more reliable connections. [Read more](#)
- Easy! Understands the basics of logging in to your router to change your port forwarding setup. [Read more](#)
- PortForward.com Support: You won't be stuck with sensitive wireless apps, we'll help you through any problems. [Read more](#)
- What PFConfig does and how PFConfig does not configure your firewall and requires a supported router. [Read more](#)
- Take the time: You won't believe how easy it is to use! [Take the tour](#)

System requirements:
Windows 98/2000/XP/Vista/Windows 7
Internet Explorer 6.0 or later and a supported router.

Download Full

Buy it!
Our sale price!
Regular price \$39.95
Get it today for only \$29.95!

start ebode IP camera IP V... PortForward.com 4



4. Login to the camera with the IPCamera Tool or manual with your Browser. (Figure 2.8)
5. Click "**Network**">"**Wireless Lan Settings**">"**Scan**", please press scan 2 times, then you will find the WLAN from the list, choose the one you use. (Figure 6.2).
- 6.

Figure 6.1.1

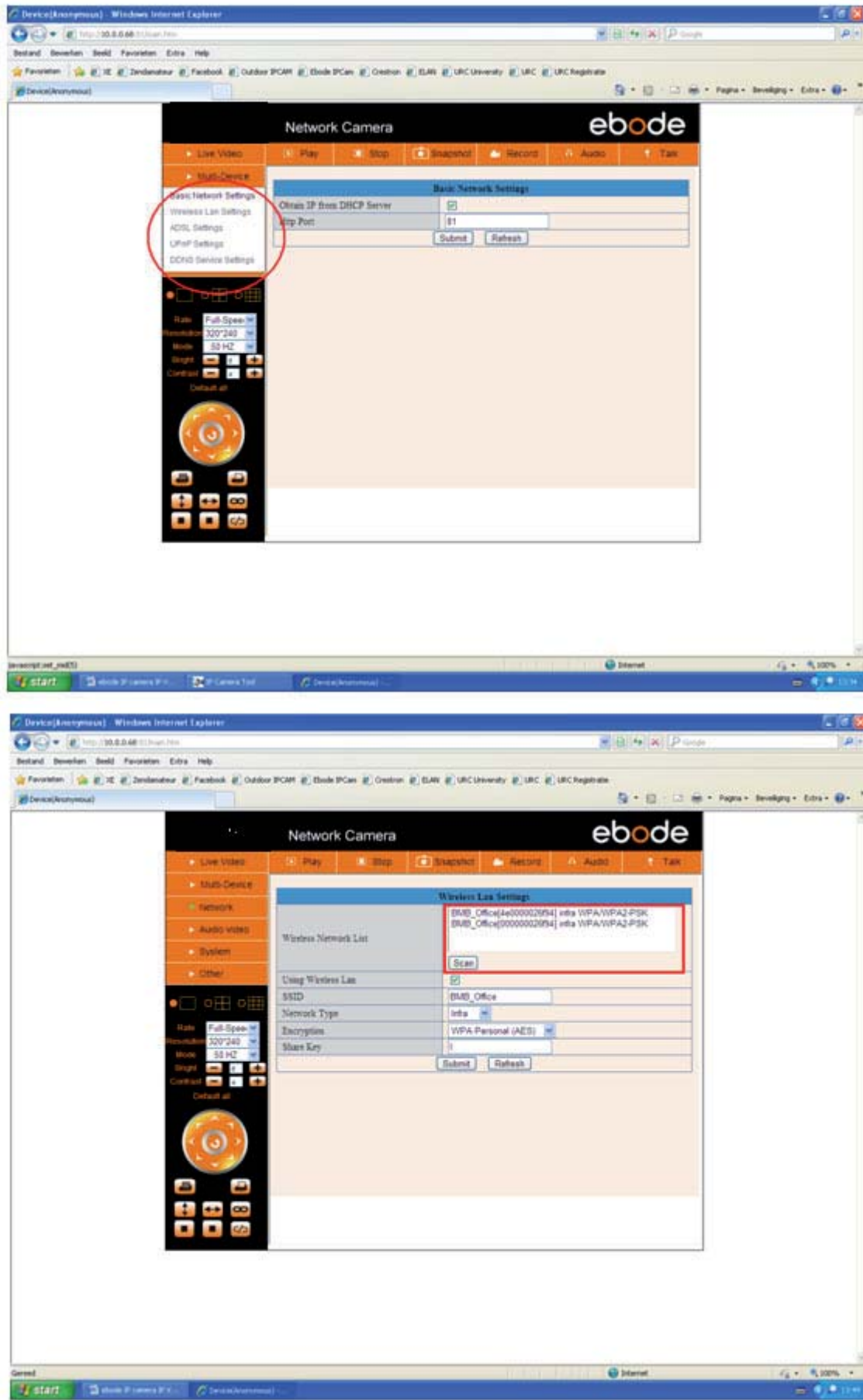
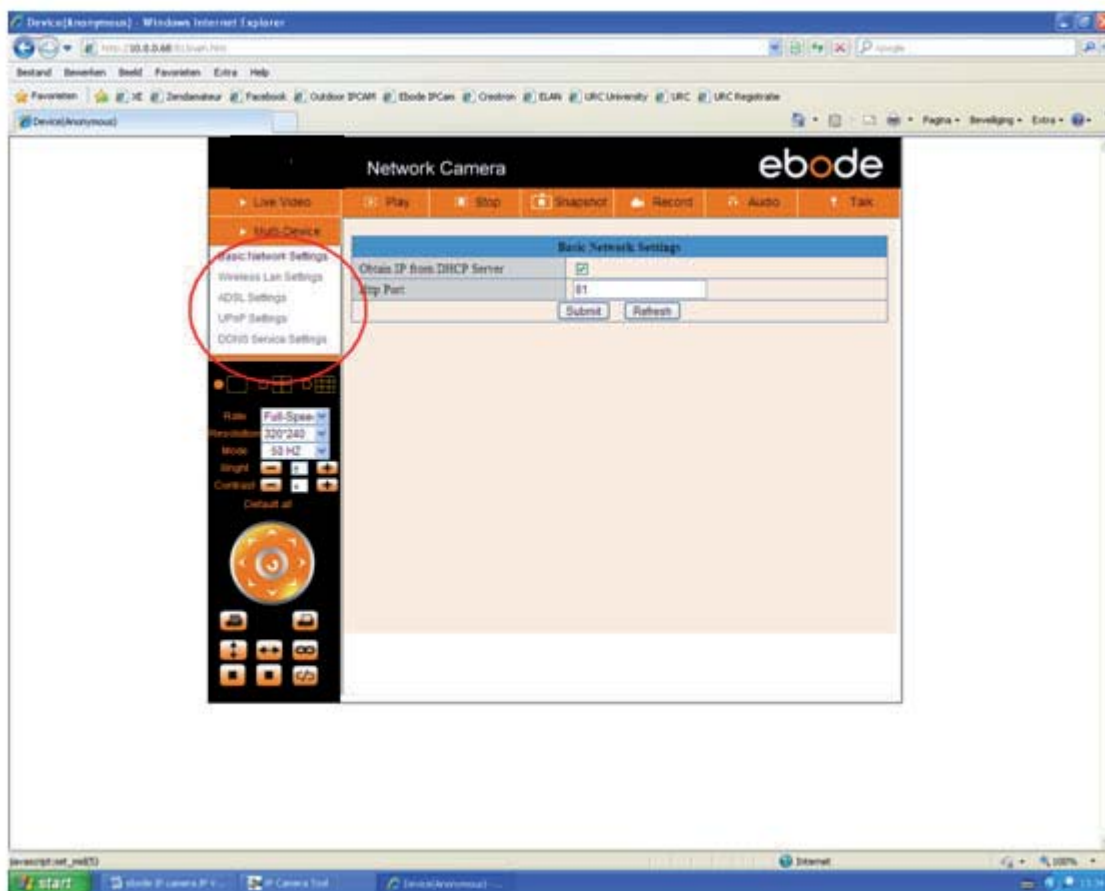


Figure 6.2

Please note that the (tree view) menu (Figure 6.1.1) can look different on different computer systems depending on the resolution of the screen used. Figure 6.1.1 shows that we had to scroll over with our

mouse and click “**Network**” inside the tree view on the left and that the options unfold in the tree view itself. After clicking “**Network**” you will see something like Figure 6.1.1.



7. Select your Wireless network in the list, please look careful and select the right one.
“Wireless Lan” can also be referred as “**SSID**” in some router manuals or on the bottom of the router.
8. Behind the SSID you can also find your type of encryption, in this particular case the Camera discovered:
Network type “**infra**” Encryption “**WEP**”.



8. If there is no encryption, just click “**Submit**”. (Figure 6.4).
9. If there is encryption, please input the share key (password), then click “**Submit**”. (Figure 6.5).
10. Wait about 30 seconds, the camera will reboot, then unplug the network cable. You might have to login to the Camera again to continue with the next steps.

Wireless Lan Settings	
Wireless Network List	<div> 123[002586745b2c] infra WEP 1[00258637ee26] infra None zhonglian[0025862c0bee] infra WEP t[e005c52b6934] infra None </div> <div> <input type="button" value="Scan"/> Wireless router SSID list </div>
Using Wireless Lan	<input checked="" type="checkbox"/>
SSID	1
Network Type	Infra
Encryption	None
<input type="button" value="Submit"/> <input type="button" value="Refresh"/>	

Figure 6.3

Wireless Lan Settings	
Wireless Network List	<div> 123[002586745b2c] infra WEP 1[00258637ee26] infra None zhonglian[0025862c0bee] infra WEP t[e005c52b6934] infra None </div> <div> <input type="button" value="Scan"/> No encryption </div>
Using Wireless Lan	<input checked="" type="checkbox"/>
SSID	1
Network Type	Infra
Encryption	None
<input type="button" value="Submit"/> <input type="button" value="Refresh"/>	

Figure 6.4

Wireless Lan Settings	
Wireless Network List	<div> 123[002586745b2c] infra WEP 1[00258637ee26] infra None zhonglian[0025862c0bee] infra WEP t[e005c52b6934] infra None </div> <div> <input type="button" value="Scan"/> </div>
Using Wireless Lan	<input checked="" type="checkbox"/>
SSID	123
Network Type	Infra
Encryption	WEP
Authentication	Open System
Key Format	Hexadecimal Number
Default TX Key	1
Key 1	<div>share key here</div> <div>64 bits</div>
Key 2	<div></div> <div>64 bits</div>
Key 3	<div></div> <div>64 bits</div>
Key 4	<div></div> <div>64 bits</div>
<input type="button" value="Submit"/> <input type="button" value="Refresh"/>	

Figure 6.5

3.5 ADSL Settings (most users won't need to use this option)

When connected to the Internet through ADSL directly, you can enter the ADSL username and password obtained from ISP.

Basic Network Settings

Wireless Lan Settings

ADSL Settings

UPnP Settings

DDNS Service Settings



ADSL Settings	
Using ADSL Dialup	<input checked="" type="checkbox"/>
ADSL User	sx102356897236518
ADSL Password
3.Submit to finish	
Submit	Refresh

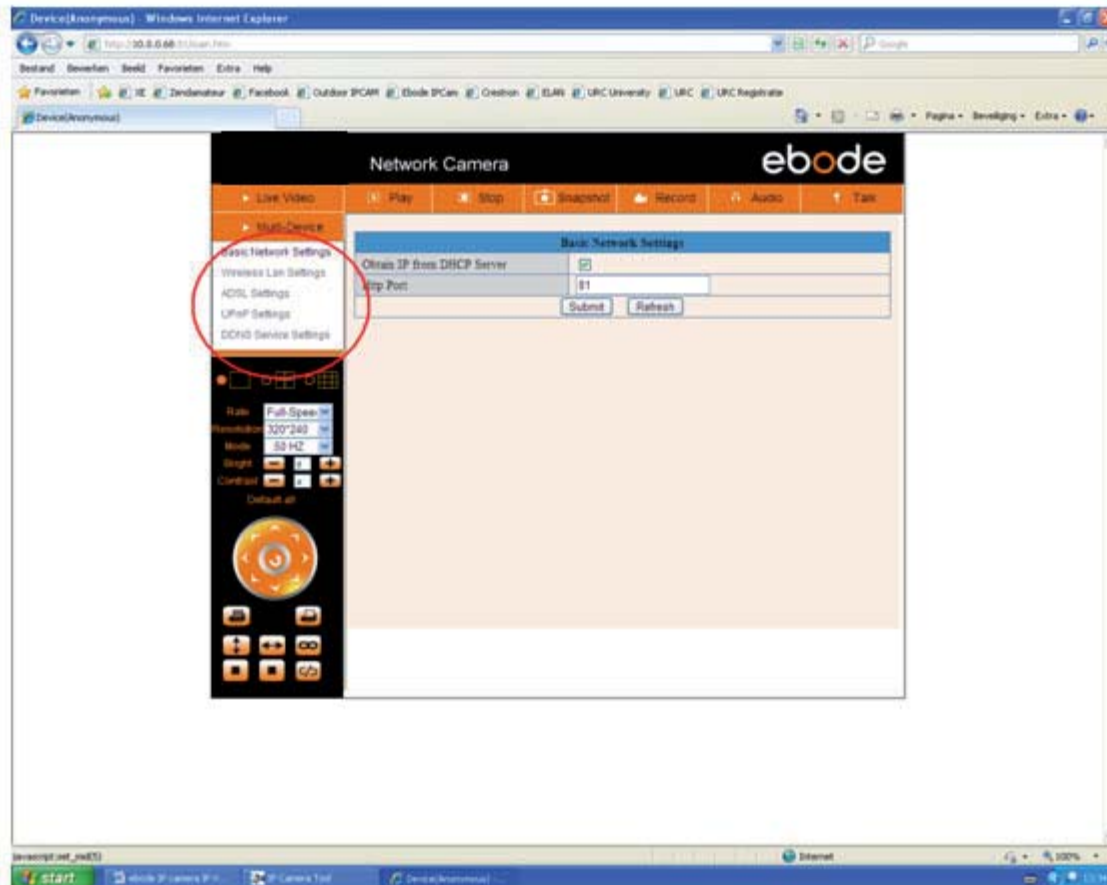
Figure 6.6

Figure 6.7

3.6 UPnP Settings

If we want to be able to see our camera live video from a computer outside our network, for example when we are at work, we have to do some advanced settings in our router. For most people this will be a difficult step, but we will try to help you out. UPnP stands for Universal plug n Play device. UPnP will do the port forwarding in the router for us, so we don't need to do this manually. In order to use this function we need to have a router that is capable of using UPnP devices. Please make sure your router supports UPnP (please check the manual of your router to determine if it supports UPnP), if not please skip the next step and continue with step 3.7 DDNS Service Settings. By default UPnP is most likely disabled in your router. Please refer to the router manual to enable UPnP.

Click **Network > UPnP Settings** to choose **Using UPnP to Map Port**:



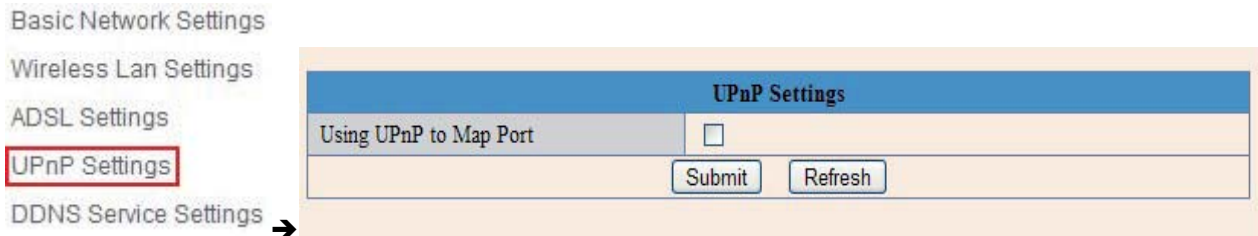


Figure 6.8

Select it and click **Submit**, then the camera will support UPnP port forwarding automatically. It's helpful for using DDNS (viewing live video from outside our network). As soon as you have enabled UPnP in your router, please proceed with the next steps.

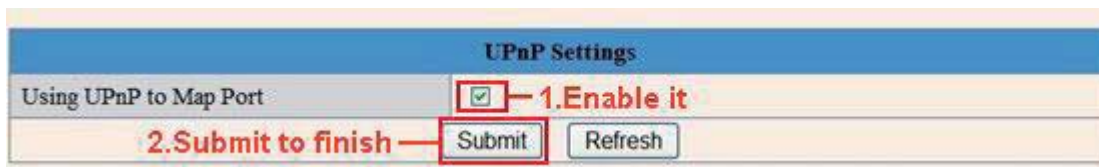
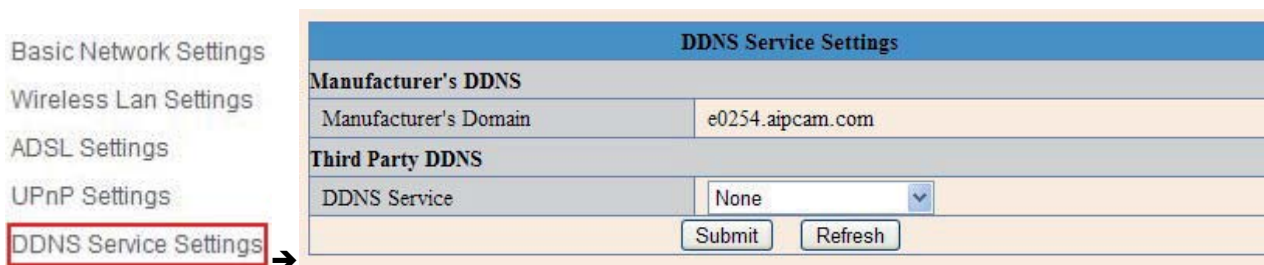


Figure 6.9

NOTE: UPnP is only for port forwarding. It relates to the security settings of your router, make sure the UPnP function of your router is enabled, before you continue. If your router does not support UPnP, it may show error information, therefore we recommend you to do port forwarding manually in your router, as explained in step 3.7.3.

3.7 DDNS Service Settings



Select Network > DDNS Service Settings in the Tree View on the left (see picture above)

There are 2 options:

Manufacturer's DDNS: This domain is provided with the Camera (see bottom of the camera). Choose 'submit'. In most cases you will need to login to the camera again. You can use the IPCamera tool for this or enter the Camera's IP address in your web browser. After you have done this, please skip the next step and continue with step 3.7.1

Third Party DDNS: You might have a DDNS server already, then it is useful to take the next steps.

This domain is provided by the third party, such as Dyndns, Oray, 3322 etc.

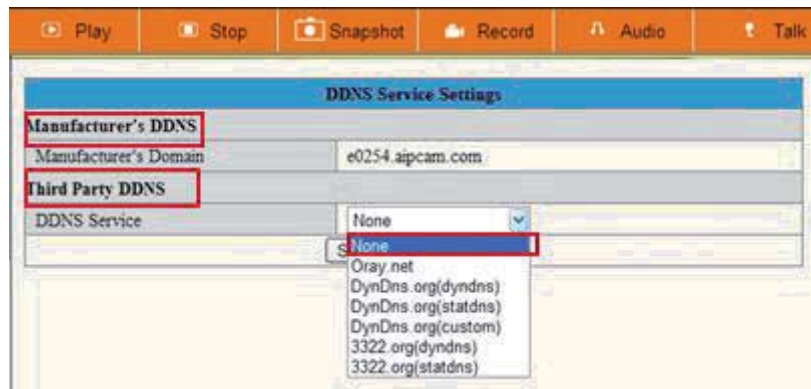


Figure 7.1

Third Party DDNS

If you use third party DDNS, please choose the server you use, such as "3322.org" or "dyndns.org" as below:

DDNS Service Settings	
Manufacturer's DDNS	
Manufacturer's Domain	a5281.aipcam.com
Third Party DDNS	
DDNS Service	3322.org(dyndns) — The server you use
DDNS User	jerryjwb
DDNS Password	••••••••••
DDNS Host	jerryjwb.3322.org
<input type="button" value="Submit"/> <input type="button" value="Refresh"/>	

Figure 7.2

DDNS Service Settings	
Manufacturer's DDNS	
Manufacturer's Domain	c4103.aipcam.com
Third Party DDNS	
DDNS Service	DynDns.org(dyndns) — The server you use
DDNS User	jerryjwb — Your User and password
DDNS Password	••••••••••
DDNS Host	jerryjwb.3322.org — Enter DDNS Host
DDNS or Proxy Server	
DDNS or Proxy Port	
Re-Update Ignoring All Errors	<input type="checkbox"/> never do this unless your hostname has been unblocked
proxy config is needed if the device is in China Mainland or HongKong	
<input type="button" value="Submit"/> <input type="button" value="Refresh"/>	

Figure 7.3

You have to register an account first, enter the user, password, and host.

NOTE: Only one DDNS can be chosen, for example, if you use the manufacturer's DDNS, the third party one won't work, if you use the third party DDNS, the manufacturer's one won't work.

3.7.1 To change the camera's port.

Open the IP Camera Tool from your Desktop select the ebode camera (it will turn blue) and right-mouse click and choose network configuration. The default port of camera is "80", please change "80" to any other one you like, such as "81", "100", "8091" etc. Click "OK", the camera will reboot, wait about 30 seconds.

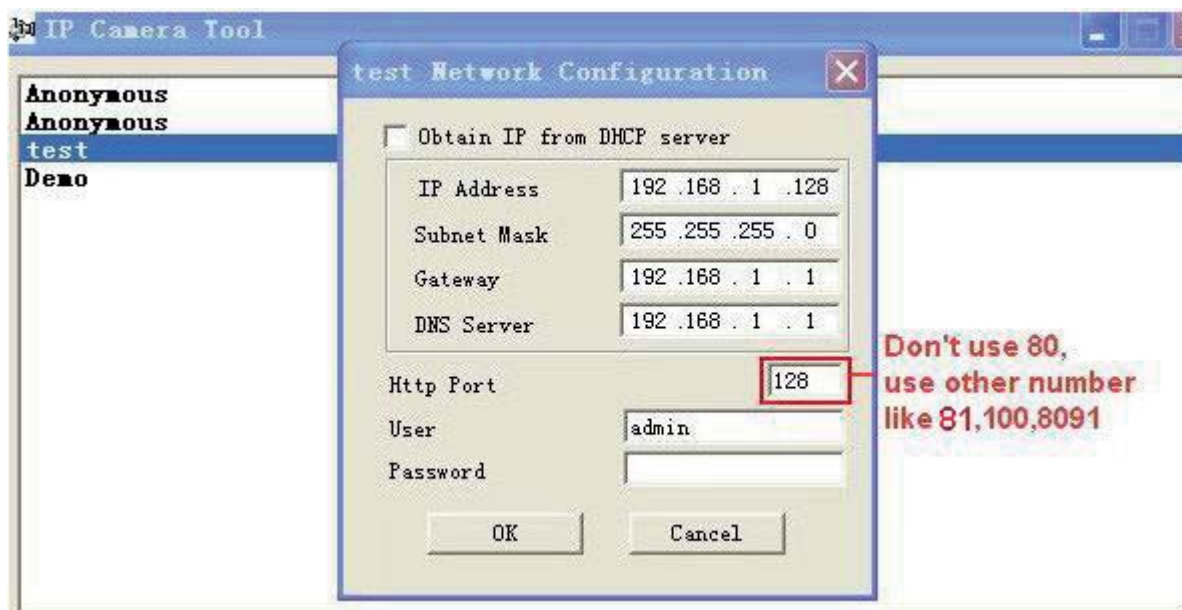


Figure 7.4

3.7.2 DDNS Status

After all these steps are done you should be able to access your camera from your mobile device or tablet (using an app). You can also access your camera via your computers' or laptops' web browser using the DDNS address.

Before you can access it, you first need to check the DDNS status from the camera. Login to the camera and choose "**System**">"**Device Info**". Please check that 'DDNS Status' shows 'succeed' followed by the address. This is illustrated in the image below. It is important that you get the address link of DDNS to access the camera from anywhere in the world. You can also find this address on the bottom of your camera. Write this address somewhere or add it as your Favourite in your web browser to visit the camera from outside the network (from your mobile device for example at work, school, on the road etc.)



Figure 7.8

Congratulations! You've know successfully installed your IP camera. It is always a good idea to ask friends or family to login to the camera from their own place. Don't forget to change the password of the camera afterwards! Please save this manual for additional features. The following steps in this manual are only

needed if the camera is not accessible from outside the network, or if you want to use additional features. If it didn't succeed, it is most likely that UPnP is not supported by your router, please set the port forwarding manually (as explained in the next step). You can always leave UPnP on, whether it's working or not. If DDNS status still doesn't show 'succeed' please check the FAQ, Chapter 4, at the back of this manual or our website www.ebodeelectronics.eu.

3.7.3 Set Port Forwarding in the router (Manually)

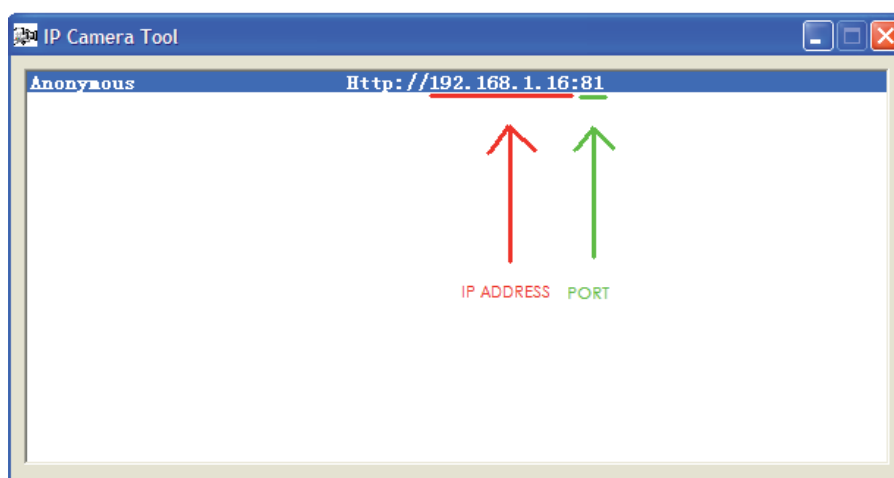
ADVISORY: We highly recommend you to give the ebode camera a static IP address. This ensures you that the camera will always have the same IP address, and reduces the risk of not being able to access and control the camera by your mobile device. To give your camera a static IP address, please check step 3.3 in this manual.

This is the most important step. Please check the 'extra information' in step 3.4 for more information about routers and port forwarding.

In order to get the DDNS to work, you have to forward your cameras port in the router. You need:

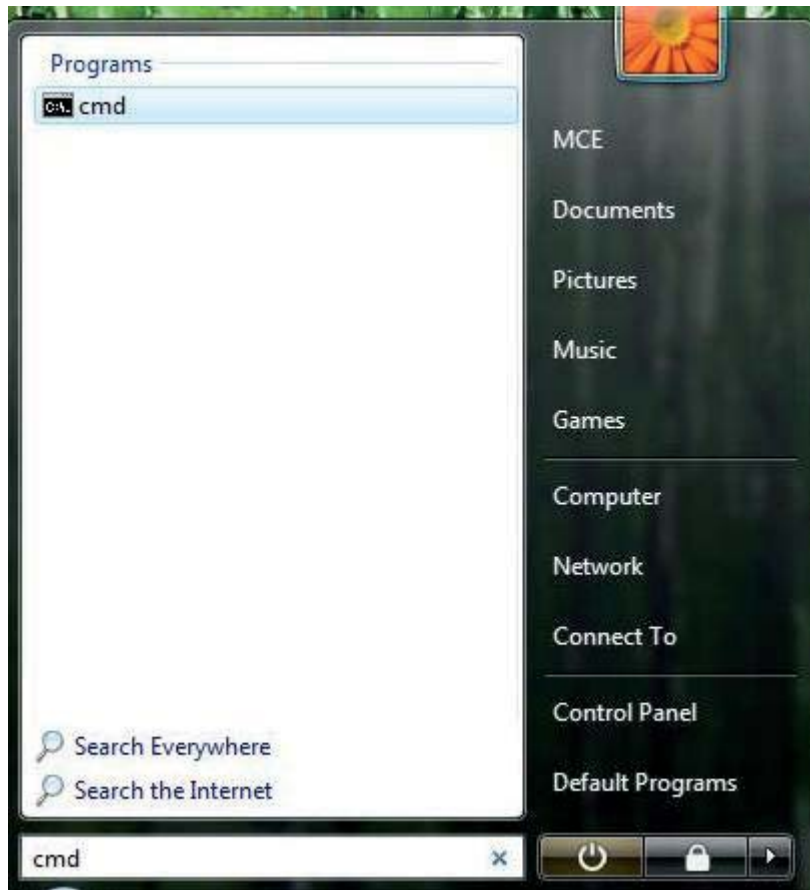
- IP address of the camera
- Port of the camera
- Default gateway IP address of the router
- Username and password of the router

The first two items can be found if you start up the IP Camera tool from your desktop. As an example the IP address from the below image is 192.168.1.16 and the port is 81.

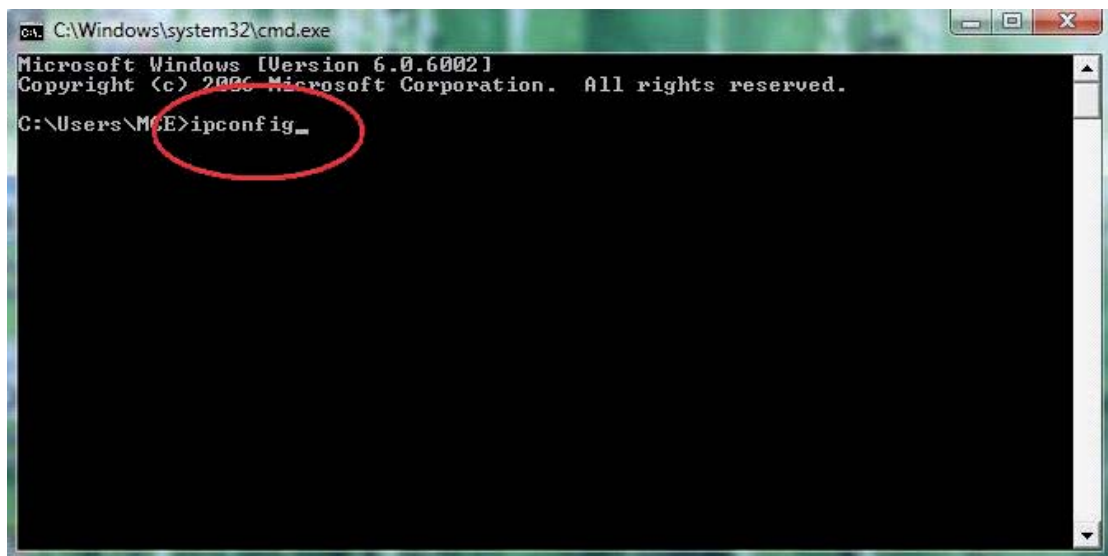


REMEMBER: Your camera should not be on Port 80. If it is, please go to step 3.7.1 to change the port number.

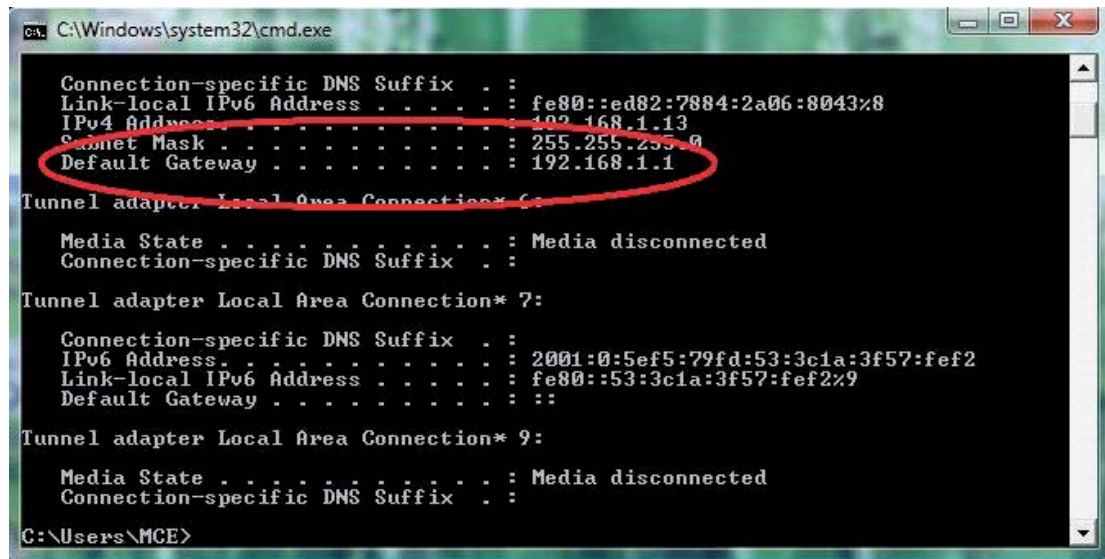
How to discover the default gateway IP address in MS Windows Vista, 7: Click 'Start', and type in 'cmd', press enter. (see image below)



Next, type in 'ipconfig' and press enter. Please refer to below image.



Finally, you can see the default gateway address, as shown in the image below.



```
C:\Windows\system32\cmd.exe

Connection-specific DNS Suffix . : 
Link-local IPv6 Address . . . . . : fe80::ed82:7884:2a06:8043%8
IPv4 Address. . . . . : 192.168.1.13
Subnet Mask . . . . . : 255.255.255.0
Default Gateway . . . . . : 192.168.1.1

Tunnel adapter Local Area Connection* 6:

Media State . . . . . : Media disconnected
Connection-specific DNS Suffix . : 

Tunnel adapter Local Area Connection* 7:

Connection-specific DNS Suffix . : 
IPv6 Address. . . . . : 2001:0:5ef5:79fd:53:3c1a:3f57:fef2
Link-local IPv6 Address . . . . . : fe80::53:3c1a:3f57:fef2%9
Default Gateway . . . . . : 

Tunnel adapter Local Area Connection* 9:

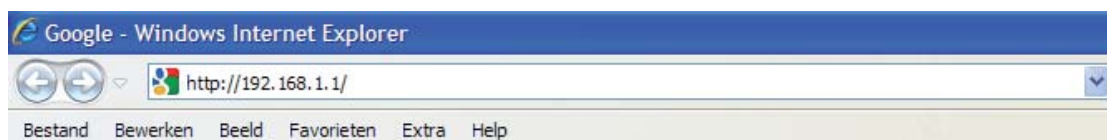
Media State . . . . . : Media disconnected
Connection-specific DNS Suffix . : 

C:\Users\MCE>
```

Now we know the default gateway address we only need to know the username and password of your router. Some routers have a sticker on the bottom with the factory username and password, other ones don't have a password, and the password can also be set by the user or mechanic. There is a very handy website with allot of router brand information like default IP address, default username and password etc. Please note we only refer to this website, we do not maintain or support it. The website is: <http://portforward.com/> Click "Router List" and find your brand and type to find more handy details about your router if you can't find them anywhere else. For more information on portforward.com, please go to step 3.4.

We know have all information to get the DDNS working, we will show you how to do this.

1. Open your web browser and type in the default gateway address and press enter.



2. Enter the username and password from the router

Verbinding met 192.168.1.1 maken [?] [X]



Server 192.168.1.1 op Login to the Router Web Configurator vereist een gebruikersnaam en wachtwoord.

Waarschuwing: deze server vraagt om uw gebruikersnaam en wachtwoord op een onveilige manier te verzenden (basisverificatie zonder beveiligde verbinding).

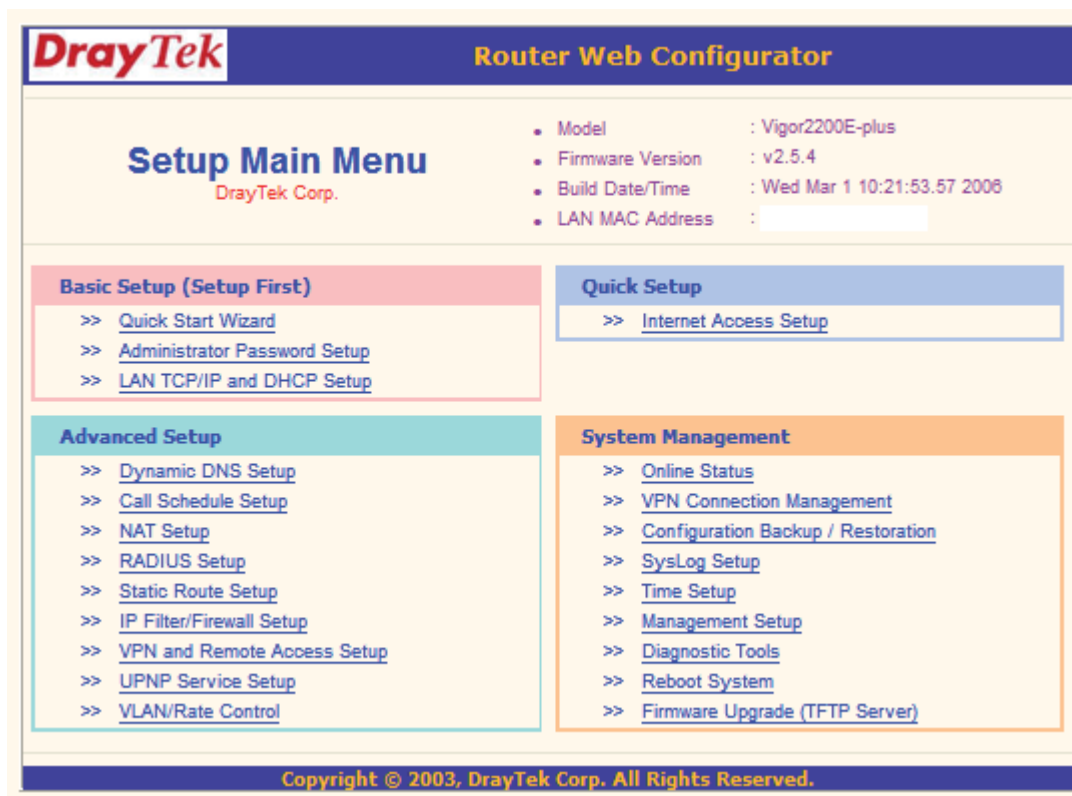
Gebruikersnaam: [v]

Wachtwoord:

☐ Dit wachtwoord onthouden

[OK] [Annuleren]

3. The next screen is the interface of your router. Please note that each brand of router has its own interface. This is just an example.



DrayTek Router Web Configurator

Setup Main Menu
DrayTek Corp.

- Model : Vigor2200E-plus
- Firmware Version : v2.5.4
- Build Date/Time : Wed Mar 1 10:21:53.57 2006
- LAN MAC Address : []

Basic Setup (Setup First)

- >> [Quick Start Wizard](#)
- >> [Administrator Password Setup](#)
- >> [LAN TCP/IP and DHCP Setup](#)

Quick Setup

- >> [Internet Access Setup](#)

Advanced Setup

- >> [Dynamic DNS Setup](#)
- >> [Call Schedule Setup](#)
- >> [NAT Setup](#)
- >> [RADIUS Setup](#)
- >> [Static Route Setup](#)
- >> [IP Filter/Firewall Setup](#)
- >> [VPN and Remote Access Setup](#)
- >> [UPNP Service Setup](#)
- >> [VLAN/Rate Control](#)

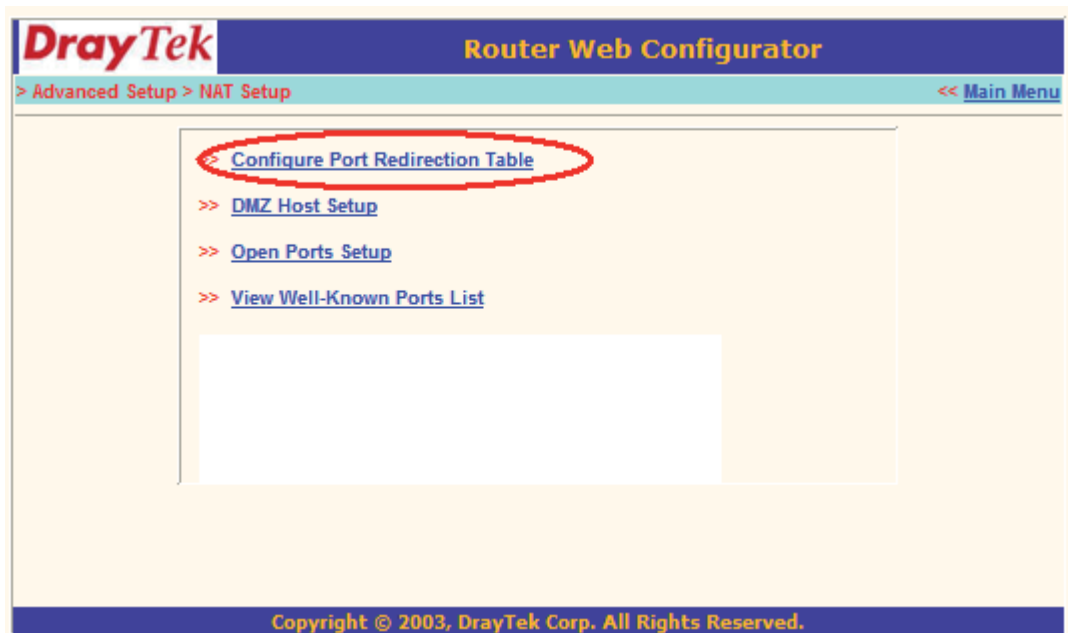
System Management

- >> [Online Status](#)
- >> [VPN Connection Management](#)
- >> [Configuration Backup / Restoration](#)
- >> [SysLog Setup](#)
- >> [Time Setup](#)
- >> [Management Setup](#)
- >> [Diagnostic Tools](#)
- >> [Reboot System](#)
- >> [Firmware Upgrade \(TFTP Server\)](#)

Copyright © 2003, DrayTek Corp. All Rights Reserved.

4. Select NAT Setup. Please note that for each brand this can have a different name for NAT setup. Portforward.com contains more information about most router brands.

5. Please choose 'Configure Port Redirection Table'



6. Now we have to let the router know, on which port the camera is located.

Service name: give the camera a recognizable name, i.e. ebode IP Cam

Protocol: Select TCP

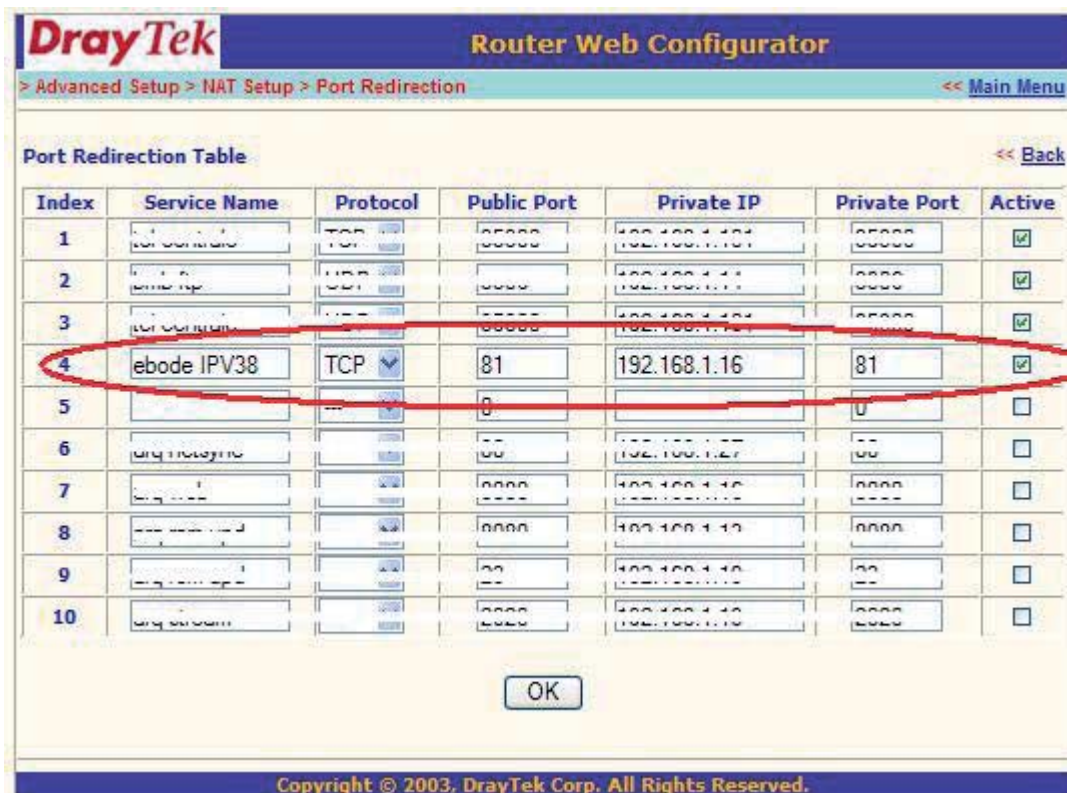
Public Port: You've checked this earlier on, please enter the right port for your camera (you can always use the IPCamera Tool to look it up, as explained at the beginning of this chapter)

Private IP: Is the IP address of the camera. Again, you can use the IPCamera Tool to look it up

Private Port: This is the same as public port

Please tick the box for 'active'

Then press ok



Now go to the DDNS Status from step 3.7.2 and check if it says 'succeed'. You should now be able to login to the camera from remote access.

However, we showed you one example, there are many different kinds of routers, therefore it's difficult to show fixed steps for each router, but here are some other samples of different router's port forwarding settings. Remember, portforwarding.com is a very useful source of information.

TP-LINK:

1. Login the router.



2. Choose "**Forwarding**", select "**Virtual Servers**"

3. Click the Add New button, pop-up below:

A screenshot of a web form titled 'Add or Modify a Virtual Server Entry'. The form has a light yellow background and a blue border. It contains the following fields: 'Service Port' (text input with a hint '(XX-XX or XX)'), 'IP Address' (text input), 'Protocol' (dropdown menu showing 'ALL'), 'Status' (dropdown menu showing 'Enabled'), and 'Common Service Port' (dropdown menu showing '-Select One-'). At the bottom right are 'Save' and 'Return' buttons.

Figure 7.5

Fill the service port (**except 80**), IP address of the camera, then click Save

NOTE: The port and IP address should be the same as the Camera.

BELKIN:

1. Login to the router.

2. Choose "**Firewall**", select "**Virtual Servers**"

3. Input the port (**except 80**) and IP address, then click save.

NOTE: The port and IP address should be the same as the Camera.

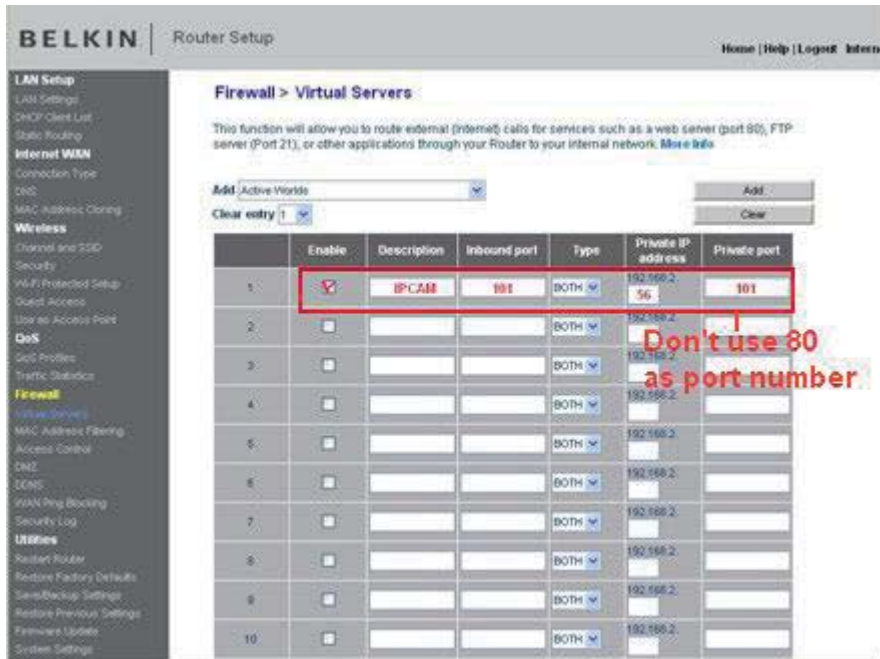


Figure 7.6

DLINK:

1. Login the router.
2. Choose "**Advanced**", select "**Virtual Servers**"
3. Input the port, IP address, Protocol, then click save.

NOTE: The "**public port**" & "**private port**" should be the same as camera's port, choose the protocol to be "**both**".

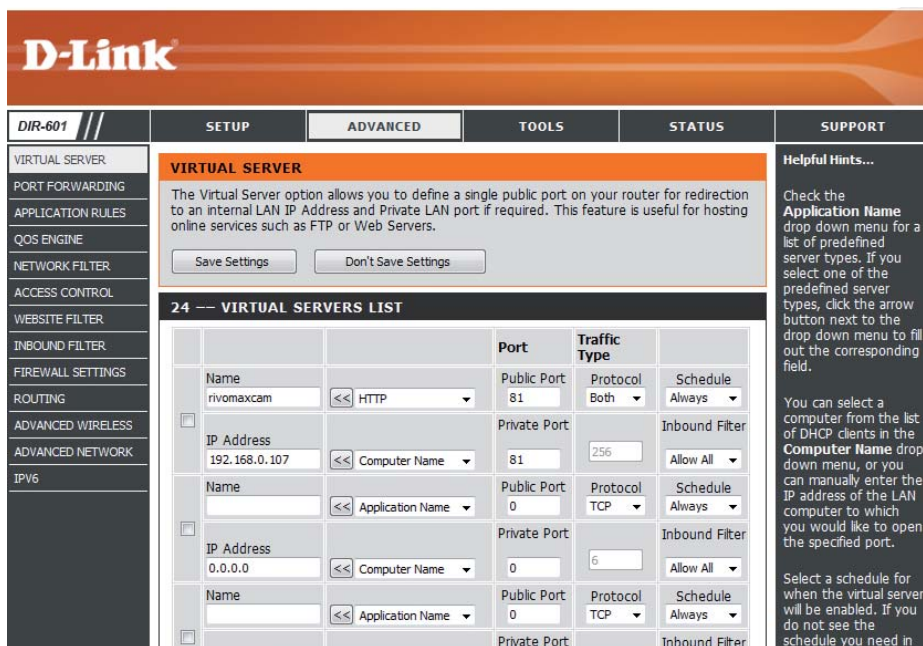


Figure 7.7

Now you are finished setting up your camera. The next steps explain additional features of your camera and FAQ.

3.8 System Settings

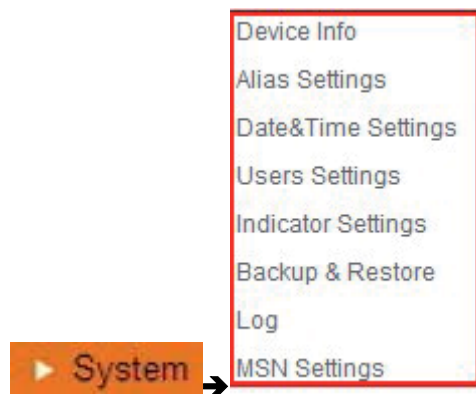


Figure 8.0

3.8.1 Device Info

You can find the information about **Device ID**, **Firmware Version**, **Embedded Web UI Version**, **Alias**, **Alarm Status**, **DDNS Status**, **UPnP Status** and **MSN status**.

Device Status	
Device ID	000DC5D008FA
Device Firmware Version	0.22.2.20
Device Embedded Web UI Version	20.8.4.23
Alias	Demo
Alarm Status	None
DDNS Status	aipcam.com Succeed http://e0254.aipcam.com:8901
UPnP Status	No Action
<input type="button" value="Refresh"/>	

Figure 8.1

3.9 Alias Settings

Default device name is anonymous. You set any new name for your camera here, then click **Submit**.

Alias Settings	
Alias	<input type="text" value="IP Cam"/>
<input type="button" value="Submit"/> <input type="button" value="Refresh"/>	

1. Enter a name you like

2. Submit to finish

Figure 8.2

3.10 Date & Time Settings

Set the date and time for your camera.

Choose the **Clock Time zone** of your country.

You can choose Sync with NTP Server (Figure 8.3) or Sync with PC Time (Figure 8.4).

Date&Time Settings	
Device Clock Time	2010年11月15日 星期一 14:34:56
Device Clock Timezone	(GMT +08:00) Beijing, Singapore, Taipei
Sync with NTP Server	<input checked="" type="checkbox"/> - Enable it, time sync with Server
Ntp Server	time.nist.gov
Sync with PC Time	<input type="checkbox"/>
Submit to finish — <input type="button" value="Submit"/> <input type="button" value="Refresh"/>	

Figure 8.3

Date&Time Settings	
Device Clock Time	2010年11月15日 星期一 14:35:34
Device Clock Timezone	(GMT +08:00) Beijing, Singapore, Taipei
Sync with NTP Server	<input type="checkbox"/> Select your time zone
Sync with PC Time	<input checked="" type="checkbox"/> - Enable it, IP Cam time sync with PC time
Submit to finish — <input type="button" value="Submit"/> <input type="button" value="Refresh"/>	

Figure 8.4

3.11 Users Settings

Eight accounts are acceptable for this system. Here you can set the user names and password as Administrator, Operator or Visitor, with permission for them as below:

- **Visitor:** In this mode, you can only view. (Details 2.7).
- **Operator:** You can control the direction of IP Camera and set some parameters. (Details 2.8).
- **Administrator:** You can setup the advanced configurations of the IP Camera. (Details 3.1-3.22).

Users Settings		
User	Password	Group
admin		Administrator
ipcam	••••••	Operator
demo	••••••	Visitor
		Visitor
		Visitor
		Visitor
		Visitor
		Visitor
<input type="button" value="Submit"/> <input type="button" value="Refresh"/>		

Figure 8.5

3.12 Pan, Tilt, (PTZ) Settings (note, there is no Zoom feature on this model)

PTZ Settings	
Go center on boot	<input checked="" type="checkbox"/>
PT speed	5
Upward patrol speed	5
Downward patrol speed	5
Leftward patrol speed	5
Rightward patrol speed	5
0: The fastest 10: The most slowly	
<input type="button" value="Submit"/> <input type="button" value="Refresh"/>	

Figure 8.6

1. **Go center on boot:** The camera rotates to the center automatically when it starts.

2. **PT speed:** Set Pan/Tilt speed.

3. **Upward patrol speed:** Set the speed of cruising upward.

4. **Downward patrol speed:** Set the speed of cruising downward.

5. **Leftward patrol speed:** Set the speed of cruising leftward.

6. **Rightward patrol speed:** Set the speed of cruising rightward.

NOTE: Value 0 means the fastest, value 10 means the slowest. In order to protect the camera's motor, we recommend that setting the speed to value 5.

3.13 Indicator Settings

Indicator Settings	
Indicator Mode	Non-connected network out
1.	Non-connected network out
2.	Non-connected network with more slow-frequency flicker
3.	Been extinguished

Figure 8.7

Set the pilot lamp mode, to one of the following three options:

(1) **Non-connected network out:** Flicker while connected to the internet and turn off when disconnected.

(2) **Non-connected network with more slow-frequency flicker:** Flicker while connect to the internet and more slower when disconnected.

(3) **Extinguished:** Stay OFF.

3.14 Backup & Restore

Backup & Restore Settings	
Backup	<input type="button" value="Submit"/>
Restore	<input type="text"/> <input type="button" value="Browse..."/> <input type="button" value="Submit"/>

Figure 8.8

- 1) **Backup**: Backup all the IP Camera Parameters, if you want to save all the current settings that you have set already, you can click **Submit**, then all the parameters you set will be stored as a parameters bin file.
- 2) **Restore**: Restore all the IP Camera Parameters, if you want to change the camera's settings to a certain status which has a backup, click **Browse** to load the bin file, then **Submit** it.

Log

Log				
Thu, 2010-11-04 20:03:00	admin	192.168.1.183	access	
Thu, 2010-11-04 20:03:38	admin	183.16.186.128	access	
Thu, 2010-11-04 20:15:01	motion detect			
Fri, 2010-11-05 08:48:09	motion detect			
Fri, 2010-11-05 10:26:11	admin	192.168.1.164	access	
Fri, 2010-11-05 12:27:53	motion detect			
Fri, 2010-11-05 21:00:04	motion detect			
Sat, 2010-11-06 09:01:15	motion detect			
Sat, 2010-11-06 09:35:47	admin	192.168.1.164	access	
Sat, 2010-11-06 09:41:36	motion detect			
Sat, 2010-11-06 11:21:03	admin	192.168.1.246	access	
Sat, 2010-11-06 12:05:09	motion detect			
Sat, 2010-11-06 12:10:23	motion detect			
Sat, 2010-11-06 12:23:35	admin	192.168.1.183	access	
Sat, 2010-11-06 12:29:39	admin	192.168.1.183	access	
Sat, 2010-11-06 12:33:35	admin	192.168.1.183	access	
Sat, 2010-11-06 12:33:44	admin	192.168.1.183	access	
Sat, 2010-11-06 12:51:06	admin	192.168.1.183	access	

Figure 8.9

Record User information, including weekday, date, time, user name, visitor IP address etc.

MSN Settings

MSN Settings	
User	test@hotmail.com
Password	●●●●●●●●
MSN buddy list	ipcamtest@hotmail.com
<input type="button" value="Submit"/> <input type="button" value="Refresh"/>	

NOTE: Set the port forwarding successfully before setting MSN (Refer to port forwarding in DDNS settings). Then go to the MSN settings page, fill in the correct user name and password, add the MSN buddy, max. up to 10 friends, after submitting, the user(s) will be shown in your MSN friend list.

Click System—Device Info to check the MSN status.

Device Status	
Device ID	00EA2162836A
Device Firmware Version	17.22.2.36
Device Embedded Web UI Version	20.8.1.82
Alias	DEMO_011
Alarm Status	None
DDNS Status	cipcam.com Succeed http://a5790.cipcam.com:91
UPnP Status	UPnP Succeed
MSN Status	Succeed
<input type="button" value="Refresh"/>	

After you run your MSN, open the chat dialog, type in the word “**url?**”, after a few seconds, you will get a reply for the remote access IP address for this IP camera.

3.15 Other Settings



Figure 9.0

Here you can configure some additional functions such as **Motion Detection**, **Alarm**, **IO Linkage**, **Schedule**, **FTP Upload**, **Alarm Mail Alert**, **Record Path**, etc.

3.16 Mail Service Settings

Set **Mail Service Settings** to enable the camera to send e-mail alerts when motion is detected.

Mail Service Settings		
Sender	IP Camera@163.com	1. Sender mailbox must support SMTP
Receiver 1	IP Camera@163.com	
Receiver 2		Support 4 receivers Need not support SMTP
Receiver 3		
Receiver 4		
SMTP Server	SMTP.163.COM	2. Enter SMTP Server for sender
SMTP Port	25	3. SMTP Port
Need Authentication	<input checked="" type="checkbox"/>	Enable it
SMTP User	IP Camera	4. Your user and password
SMTP Password	••••••	
	6. Test it	Test Please set at first, and then test.
Report Internet IP by Mail	<input type="checkbox"/>	
<input type="button" value="Submit"/> <input type="button" value="Refresh"/>		5. Submit before test

Figure 9.1

Sender: Make sure the sender mailbox server provider supports SMTP, and the mailbox should not enable SSL or TLS encryption.

Receiver: Here you can set four receivers. For receiver, there is no SMTP limitation.

SMTP Server: The sender's SMTP Server.

SMTP Port: The sender's SMTP Port, usually is 25, some SMTP servers have their own port, such as 587.

Need Authentication: If there is SMTP user & password, please select authentication.

SMTP User: Input correct SMTP User here. Some SMTP User is the sender's full email address, such as **test@qq.com**, some are without suffix, only the username, such as **test**.

SMTP Password: Input correct SMTP password here.

NOTE: Please click **Submit** first before choosing **Test**.

You will see the test result after click **Test**.

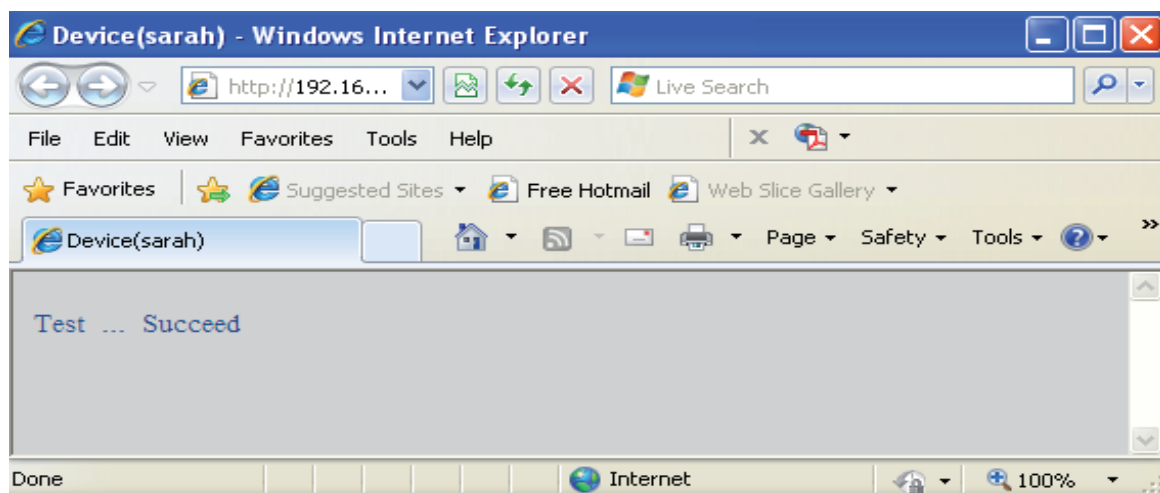


Figure 9.2

If it shows the following errors when you click **Test**. Please check whether the information you filled in is incorrect and try again.

- 1) Cannot connect to the server.
- 2) Network Error. Please try later.
- 3) Server Error.
- 4) Incorrect user or password.
- 5) The sender is denied by the server. Maybe the server needs to authenticate the user, please check and try again.
- 6) The receiver is denied by the server. Maybe because of the anti-spam privacy of the server.
- 7) The message is denied by the server. Maybe because of the anti-spam privacy of the server.
- 8) The server does not support the authentication mode used by the device.

Report Internet IP by Mail: If selected, you will receive e-mails that contain the camera's internet IP. When camera is powered on or Internet IP changed, it will send the internet IP by e-mail. (For example: IPCAM's URL is <http://121.213.109.69:1008>).

3.17 FTP Service Settings

Set the **FTP Service**, you can upload images to your FTP server when motion is detected.

The screenshot shows the 'FTP Service Settings' form with the following fields and values:

FTP Service Settings	
FTP Server	192.168.1.50
FTP Port	21
FTP User	IPCAM
FTP Password	*****
FTP Upload Folder	/
FTP Mode	PORT
	Test Please set at first, and then test.
Upload Image Now	<input checked="" type="checkbox"/>
Upload Interval (Seconds)	30
<input type="button" value="Submit"/> <input type="button" value="Refresh"/>	

Below the form, a red text instruction reads: **Please click Submit first before test**

Figure 9.3

The screenshot shows the 'Ftp Service Settings' form with the following fields and values:

Ftp Service Settings	
FTP Server	ftp.ipvideo.com
FTP Port	21
FTP User	test@ipvideo.com
FTP Password	*****
FTP Upload Folder	/
FTP Mode	PASV
	Test Please set at first, and then test.
Upload Image Now	<input checked="" type="checkbox"/>
Upload Interval (Seconds)	20
<input type="button" value="Submit"/> <input type="button" value="Refresh"/>	

Figure 9.4

FTP Server: If your FTP server is set up in LAN. You can set as Figure 9.3.

If you have an FTP server that can be accessed from the Internet, you can set as Figure 9.4.

FTP Port: Usually the port is 21.

FTP Upload Folder: Make sure that the folder you plan to store images in exists. The camera cannot create the folder itself. Also, the folder must be erasable.

FTP Mode: It supports standard (POST) mode and passive (PASV) mode.

Upload Image Now: It will upload images when you selected it. Here **Upload Interval** refers to the time between the current image and the next image.

NOTE: Here upload image now means it can upload images freely, no alarm trigger needed.

Click **Submit** after these settings. Then click **Test**. You will see the following picture.

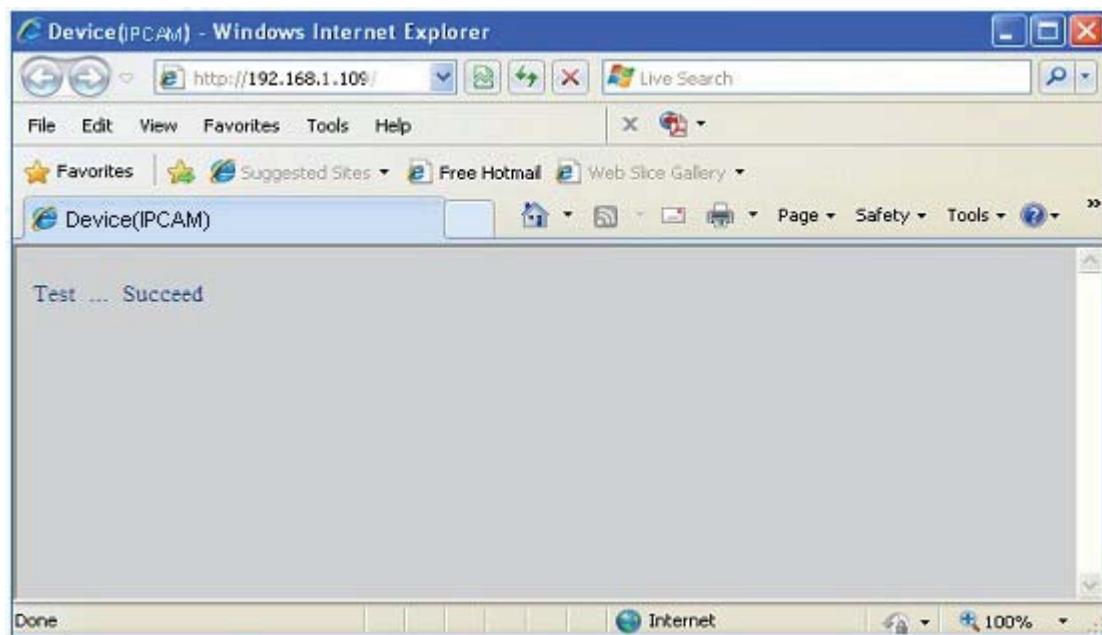


Figure 9.5

If it prompts error information as follows.

- 1) Cannot connect to the server. Please check FTP Server is correct.
- 2) Network Error. Please try later.
- 3) Server Error.
- 4) Incorrect user or password. Please check the username and password is correct.
- 5) Cannot access the folder. Please be sure the folder exists and your account is authorized.
- 6) Error in PASV mode. Please be sure the server supports PASV mode.
- 7) Error in PORT mode. PASV mode should be selected if the device is behind a NAT.
- 8) Cannot upload file. Please be sure your account is authorized.

Please check if parameters you filled in are correct. The format of image is like 000DC5D008FA (IPCAM) _0_20101115152525_25.jpg

Please check if your FTP server supports this format of file name.

3.18 Alarm Service Settings

Mail Service Settings
Ftp Service Settings
Alarm Service Settings
Path Settings

→

Alarm Service Settings	
Motion Detect Armed	<input type="checkbox"/>
Alarm Input Armed	<input type="checkbox"/>
Sound on Alarm	<input checked="" type="checkbox"/>
Record on Alarm	<input checked="" type="checkbox"/>
<input type="button" value="Submit"/> <input type="button" value="Refresh"/>	

Figure 9.6

Enter **Alarm Service Settings** page to configure Motion Detection function.

3.18.1 Motion Detect Armed

If you enable **Motion Detect Armed**, it will record and make an alarm sound when there is motion detected.

Alarm Service Settings	
Motion Detect Armed	<input checked="" type="checkbox"/> → 1. Enable it
Motion Detect Sensibility	5 ▾ the bigger number, the higher sensitivity)
Start the motion detection compensation	<input type="checkbox"/> (Reduce false alarms in case of the light mutation)
Alarm Input Armed	<input type="checkbox"/> → 2. Choose the sensibility
IO Linkage on Alarm	<input type="checkbox"/>
Alarm Notification by Http	<input type="checkbox"/>
Send Mail on Alarm	<input type="checkbox"/>
Call the preset position	disabled ▾
Upload Image on Alarm	<input type="checkbox"/>
Scheduler	<input type="checkbox"/>
Sound on Alarm	<input checked="" type="checkbox"/> → 3. Enable it optional
Record on Alarm	<input checked="" type="checkbox"/> → 4. Submit
<input type="button" value="Submit"/> <input type="button" value="Refresh"/>	

Figure 9.7

After you enable motion detect armed, if there is motion detected, the **Alarm Status** will turn to **Motion Detect Alarm**. (Figure 9.8).

Device Status	
Device ID	000DC5D008FA
Device Firmware Version	0.22.2.20
Device Embedded Web UI Version	20.8.4.23
Alias	Demo
Alarm Status	Motion Detect Alarm
DDNS Status	aipcam.com Succeed http://e0254.aipcam.com:8901
UPnP Status	UPnP Succeed
Refresh	

Figure 9.8

3.18.2 Motion Detect Sensitivity

You can choose level 1-10; level 10 means the most sensitive, 1 means the least sensitive.

Alarm Service Settings	
Motion Detect Armed	<input checked="" type="checkbox"/>
Motion Detect Sensibility	5 (the bigger number, the higher sensitivity)
Start the motion detection compensation	1 (reduce false alarms in case of the light mutation)
Alarm Input Armed	2
IO Linkage on Alarm	3
Alarm Notification by Http	4
Send Mail on Alarm	5
Call the preset position	6
Upload Image on Alarm	7
	8
	9
	10

Figure 9.9

3.18.3 Alarm Input Armed / IO Linkage on Alarm

If you want to connect external alarm devices, when it's an alarm input device, choose **Alarm Input Armed** to enable it, when it's an output device, choose **IO Linkage on Alarm** to enable it.

Alarm Service Settings	
Motion Detect Armed	<input checked="" type="checkbox"/> — Enable it for motion detect
Motion Detect Sensibility	5 — Choose the motion detect sensibility
Alarm Input Armed	<input checked="" type="checkbox"/> — Enable it for alarm input
Triger Level	High — Choose the triger level
IO Linkage on Alarm	<input checked="" type="checkbox"/> — Enable it for linkage on alarm
Output Level	Low — Choose the output level
Send Mail on Alarm	<input type="checkbox"/> — Enable it
Upload Image on Alarm	<input type="checkbox"/> — Send mail on Alarm
Scheduler	<input type="checkbox"/> — Enable it
Sound on Alarm	<input checked="" type="checkbox"/> — Upload image on Alarm
Record on Alarm	<input checked="" type="checkbox"/>
<input type="button" value="Submit"/> <input type="button" value="Refresh"/>	

Figure 10.0

There are two options for **Triger Level**. (Figure 10.1).

High: When the external alarm device is close, then the alarm is triggered.

Low: When the external alarm device is switching off, then the alarm is triggered.

Alarm Input Armed	<input checked="" type="checkbox"/> — 1
Triger Level	High — 2
IO Linkage on Alarm	Low
	High

Figure 10.1

There are two options for **Output Level**. (Figure 10.2).

High: When chosen, the IO Pins work as a switch that is closed.

Low: When chosen, the IO Pins work as a switch that is switching off.

IO Linkage on Alarm	<input checked="" type="checkbox"/> — 3
Output Level	Low — 4
Send Mail on Alarm	Low
	High

Figure 10.2

3.18.4 IO Pins for IO Alarm Linkage



Figure 10.3

I/O PINS: 1 .Alarm input 2 Alarm input 3 Alarm output 4 Alarm output

Input pins: The input pins can be used for 1-way external sensor input. For example, you may connect a Person Infrared Sensor (PIP) to it for motion detection. When external sensor triggered, IP CAMERA can be programmed to send an email with picture or control the internal relay output.

If you link an external alarm device with Pin3 and Pin4, when select **Alarm Input Armed** (Figure 10.0), external alarm is enabled.

Output pins: The output pins can enable IO linkage on alarm.

You can also use  &  to control IO output Switch ON/OFF (See Figure 4.4).

NOTE: All the pins work as switch only.

3.19 Send e-mail on Alarm

When chosen, it will send picture and e-mail to your e-mail once alarmed. (First you should finish the e-mail Service Settings. Figure 9.1).

NOTE: It usually will send 6 snapshots by one e-mail to your mailbox for each alarm triggered. Each alarm will last for 60 seconds.

Upload Image on Alarm

Enable **Upload Image on Alarm** to set upload images to FTP once alarmed.

Upload Interval: Set the upload interval (Seconds).

NOTE: The total alarm time is 60 seconds.

Upload Image on Alarm	<input checked="" type="checkbox"/>
Upload Interval (Seconds)	<input type="text" value="0"/>

Figure 10.4

Scheduler

Here you can set the camera alarm during the time you set. Choose Scheduler and set the date & time range. (Figure 10.5) From Monday to Sunday, and every day divided into 24 hours, each hour divided into 4 quarters.

Left click the frame of the time range, it will turn to blue color, which means the time you choose to be armed.

Click it again, it will turn back to gray, which means delete the scheduler.

NOTE: Make sure the date & time settings are correct first. (Figure 8.3).

ATTENTION: If you don't choose **Scheduler**, the camera will alarm anytime when motion triggered.

Scheduler	<input checked="" type="checkbox"/>	Enable it to set Scheduler																						
Day	0	1	2	3	4	5	6	7	8	9	10	11	12	13	14	15	16	17	18	19	20	21	22	23
Sun																								
Mon																								
Tue																								
Wed																								
Thu																								
Fri																								
Sat																								

Figure 10.5

Sound on Alarm

When motion is detected, there will be a beep sound during the alarm, you can control this sound here.

If Enabled, there will be sound once alarmed.

If Canceled, there will be no sound once alarmed.

Record on Alarm

If you want the camera to record for every alarm, choose Record on Alarm to enable it.

If you do not want the camera to record once the alarm is triggered, cancel it here.

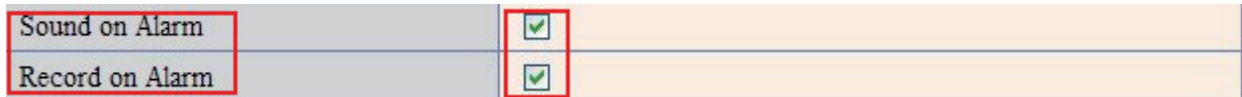


Figure 10.6

Once an alarm has occurred, there will be indication as below:

1. The corresponding status light turns Red and keeps blinking.



Figure 10.7

2. If you set **Sound on Alarm**, you can hear a beep sound from your computer you use when alarmed. (Figure 10.6).

3. If you set **Record on Alarm**, the camera will record automatically for approx one minute. You can find the record file in the folder which you set. (Figure 10.9).

4. If you set **Send Mail on Alarm**, you will receive e-mail alarm alert once motion is detected. (Figure 10.0).

5. You can also set **Scheduler** to enable the camera to send e-mails during a special time range you want. (Figure 10.5).

6. If you set **Upload Image on Alarm**, it will upload images to the FTP Server you set already, once alarmed. (Figure 10.4).

NOTE: Each alarm only lasts for approx one minute, all the above functions for motion detection triggered only.

REC Automatically and Save to PC

When you enable motion detect and open the camera monitoring page on the PC, if there is an alarm triggered, REC will start automatically for several seconds and save to the PC.

New Feature: Start the motion detection compensation and Alarm notification by Http.

3.20 Path Settings




Figure 10.8

Here you can set record path and alarm record path for the camera.

Path Settings		
Record Path	E:\	Browse...
Alarm Record Path	E:\	Browse...

Figure 10.9

Record Path: Here you can set the manually record path. Click  **Record** then start manual recording, the record file will be saved to the specified path you set here.

Alarm Record Path: Here you can set the alarm record path. When motion is detected, and record enabled, it will start alarm record automatically, the record file will be saved to the specified path you set here.

Path Settings		
Record Path	E:\	Browse...
Alarm Record Path	E:\	Browse...

Choose record path in your PC (pointing to Record Path field)

Choose alarm record path in your PC (pointing to Alarm Record Path field)

Figure 11.0

NOTE: If you couldn't set the path here in Windows 7 or Vista, please do it as below:

Windows 7 or Vista's security level is higher than Windows XP, for **"Path Settings"**

1. User could add the Device IP address to the IE's 'Trusted sites' first. The step is:

"IE browser→Tool→Internet Proper→Security→Trusted sites→Sites→Add".

2. You can also run the IE as administrator, input the IP address of the camera manually. (Figure 11.1).

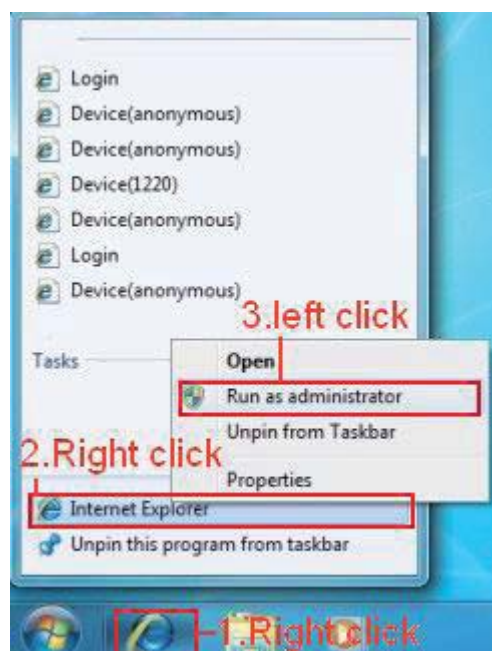


Figure 11.1

3.21 Server Push Mode (For Safari, FireFox, Google Browser)

Choose **Server Push Mode**, login the camera, you will see the main user interface as below:

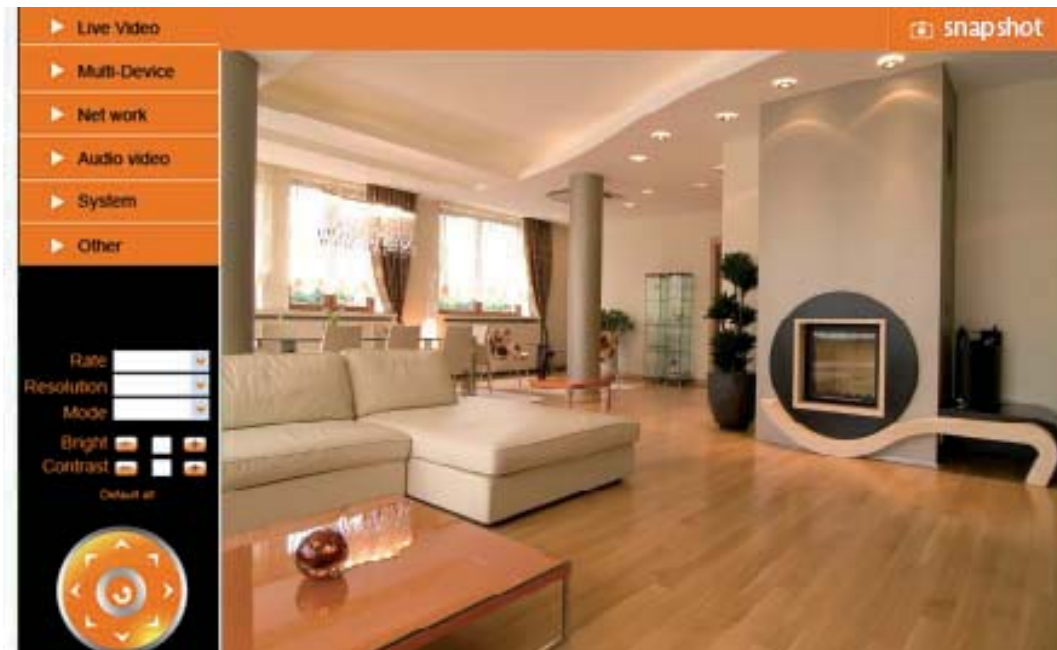


Figure 11.2

NOTE: Server Push Mode does not support ActiveX.

Play, Stop, Record, Audio, Talk, Multi-device settings, Path settings functions are controlled by ActiveX, so if you use Safari, Firefox, Google chrome browser, it is not possible to use these options. The other functions are the same as for **IE Browser**.

3.22 Sign in mobile phone

If you are using a mobile phone, choose **Sign in mobile phone**, login to the camera, you will see the main user interface as below:

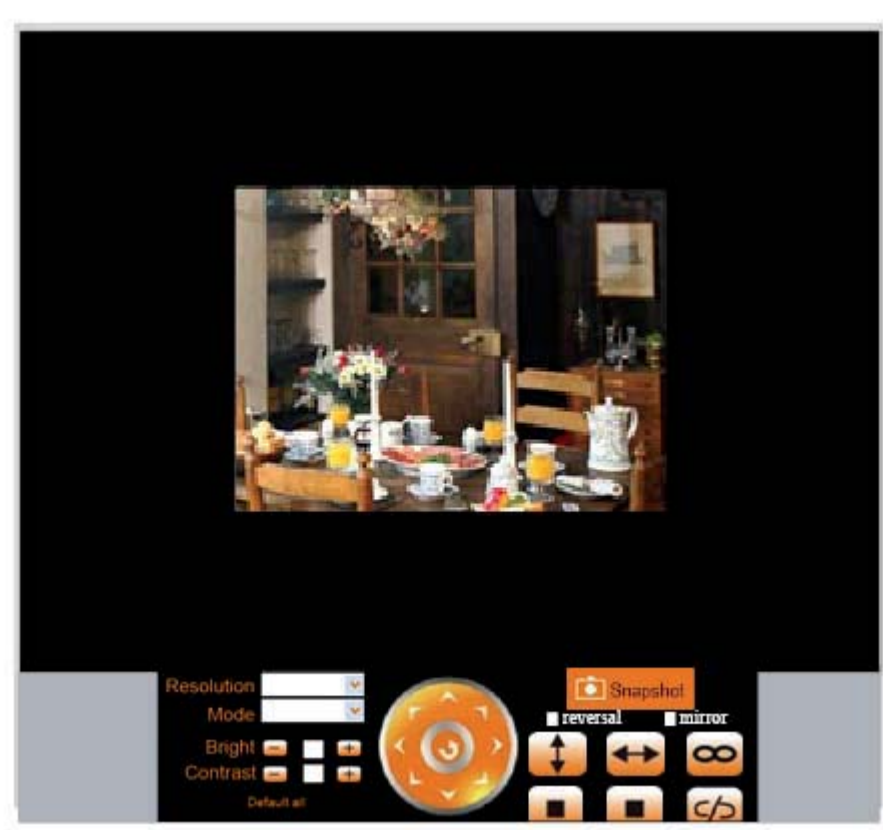


Figure 11.3

NOTE: Mobile phone Mode doesn't support ActiveX.

In mobile phone mode, it only supports some simple functions, such as **Resolution, Mode, Bright, Contrast, Pan/Tilt control, Snapshot, Reversal, Mirror, IO Linkage** functions.

3.23 Compatible Apps for mobile devices

Recently we introduced our own ebode app for the IP camera. With this app you can remotely view and control your ebode IP camera from your iPad®, iPhone® or iPod Touch®, wherever you are*.



Go to the App Store to download the [IPVision App](#) (€3,99)

FEATURES

- View the live video feed of your cameras
- Control the cameras in all 8 directions (if supported by the camera)
- Motion detection (only for cameras that support it): send mail on motion detection, set sensitivity, Quickly enable/disable the alarm
- Zoom in and out on the image by pinching (even when your camera doesn't support zoom)
- Fullscreen by rotating the device to a landscape position
- Fullscreen controls
- Swipe in fullscreen view to select another camera, this only works when not zoomed in (double tap to zoom to 100%)
- Take snapshots and save it to your camera roll
- Adjust brightness/contrast
- Mirror and flip is taken into account (so the controls will still work intuitively, even when the camera is mounted to a ceiling for example)
- Change camera resolution
- Adjust brightness and contrast
- Multiple camera support (up to 144 cameras)
- Mosaic view for showing 4 cameras (in landscape) and 6 cameras (in portrait) simultaneously
- Swipe in mosaic view to view more other cameras
- Possibility to lock PTZ controls and/or rotation
- iOS 4 tested and supported
- Taking full advantage of retina display on iPhone 4

SUPPORTED CAMERAS

Please note that this app is ONLY compatible with ebode MJPEG cameras, cameras of other brands are not supported.

*** NOTE THAT NOT ALL FEATURES WILL WORK WITH ALL CAMERA MODELS ***

*3G or wireless network connection required. For use outside your home network you'll need to setup port forwarding on your router, see the FAQ.

Also there is a free App available: The [CamViewer](#) from John McKerrell

4.0 APPENDIX

4.1 Frequently Asked Questions

Note: For most problems you might encounter, please check Network connections first.

Check the working status revealed by the indicators on the network server, hub, exchange and network card. If abnormal, check the network connections.

4.1.1 I have forgotten the administrator username and/or password.

To reset the administrator username and password, press and hold down the RESET BUTTON for 15 seconds. Release the power button and the username and password will be reset back to the factory default administrator username and password.

Default administrator username: **admin**

Default administrator password: None, i.e., no password

4.1.2 Subnet doesn't match, double click to change

If IP Camera Tool shows error information "Subnet doesn't match, double click to change!" Please choose **Obtain IP from DHCP server**. (Figure 2.2).

If it still shows this error after obtaining IP from DHCP server, please check local area connection of your computer, change subnet, gateway of the camera. Keep them in the same subnet as your computer. (Figure 2.3).

4.1.3 IP Address configuration

Check whether IP address of the IP camera server shares the same subnet as your computer: Click **My Computer >Control Panel> Network & Dial-up Connections > LAN > Attributes >Internet Protocols (TCP/IP)**, and check **IP Address** and **Subnet Mask**. Make sure they are in the same subnet when configuring the camera's IP address manually.

4.1.4 Can't access IP camera via the Internet

Some typical reasons:

1. ActiveX controller is not installed correctly (see more details: Figure 2.9 - Figure 3.1).
2. The port that the camera is using is blocked by your Firewall or Anti-virus software. Please change to another port number and try again. (Figure 3.2).
3. Port forwarding is not successful (for more details see Figure 7.4 - Figure 7.9).
Double check these settings and make sure they are correct.

4.1.5 IP Camera Tool could not find camera's IP

Make sure the camera is connected to its power supply and the power supply is plugged in. Check if the network cable is not loose.

Make sure DHCP is enabled in your router, don't enable MAC address filter.

Make sure that firewall or anti-virus software does not block the camera. You can add the camera as a trusted site in your firewall or anti-virus software.

4.1.6 UPnP always fails

UPnP only contains port forwarding in our recent software. Sometimes, it might fail to do port forwarding automatically because of firewall or anti-virus software. It also relates to your router's security settings. So we recommend you do port forwarding manually. You can view your camera via the Internet successfully after you do port forwarding manually in your router.

4.1.7 Couldn't find the shortcut on desktop after install IP camera tool

If you use Windows 7 or Vista, and you could not find the shortcut on desktop after installing the IP camera tool, please check if the path of the tool port to is correct.

For example, was it was pointing to C:\Windows\System32\IPCamera.exe.

Please fix this by pointing the shortcut to the correct path C:\Windows\SysWOW64\IPCamera.exe. After this you should be able to use the shortcut without any problems.

4.1.8 I can't change the record path

When you use Windows 7 or Vista, you may be not able to change the record path due to the security settings of your computer.

1. Please add the camera as a trusted site to solve this issue.

The step is: "**IE browser**→**Tool**→**Internet Proper**→**Security**→**Trusted sites**→**Sites**→**Add**".

2. You can also run the IE as administrator; input the IP address of the camera manually.

4.1.9 I can't find multi-device settings and record icon

Record and multi-device function are controlled by activeX controller.

So if you use Safari, Firefox, or Google chrome, it is not possible to use these functions.

4.1.10 Camera cannot connect wirelessly

If your camera could not connect wirelessly after you set wireless settings and unplug the Network cable:

Please check whether your settings are correct. (Details: **Wireless LAN settings**).

If the camera can't connect wirelessly it is usually because of wrong settings.

Double check the SSID, Encryption share key, Channel, should be the same as your wireless router.

Share key should not contain special characters, only letters and numbers.

Don't enable MAC address filter.

4.1.11 I can't see other cameras in multi-device configuration by remote access

If you want to view all the cameras in your WAN. Make sure that each camera you add in multi-device settings can be logged-in using DDNS name and port number. Use DDNS domain name to fill in the host checkbox, not camera's LAN IP. Double check your settings. (Details: **Set Multi-Device for WAN**).

4.1.12 I only see black screen or unusual code when remotely logged in

If you could access the login page in a remote place, it indicates that your DDNS settings are correct. But if you could not see live video, but only some undefined characters, it may be internet speed problems, especially if the camera works OK via Wi-Fi.

4.1.13 There's no picture (Problems with ActiveX Controller)

If using IE browser to connect the camera for the first time, and there is no image displayed, you might need to install ActiveX. You need to change some browser settings to enable ActiveX. (See: **For IE Browser**).

4.1.14 Problems with network bandwidth

The image frame rate is subject to the following factors:


1. Network bandwidth.
2. PC performance, network environment and display preference setting (brightness, theme, etc).
3. The number of visitors (too many visitors will slow down the image frame rate).
4. Choice of switch or hub (use a switch for multiple IP Camera Servers rather than a HUB).

4.1.15 How to register an account from DDNS web

You can enter <http://www.dyndns.com> and **register an account**.

4.1.16 Pop-up the prompt" Fail to connect to the device..."?

This prompt only appears in the case of using multiple cameras.

When you set multiple cameras, and the device status light changes to yellow  please make sure the cameras are connected to power and working correctly.

4.2 Default Parameters

Default network Parameters

IP address: dynamic

Subnet mask: dynamic

Gateway: dynamic

DHCP: Disabled

DDNS: factory DDNS and third party DDNS

Username and password

Default administrator username: **admin**

Default administrator password: None, i.e., no password, please leave blank

5.0 SPECIFICATIONS

Specification:		Model: IPV68
Image Sensor	Image Sensor	1/4" Color CMOS Sensor
	Display Resolution	640 x 480 Pixels(300k Pixels)
	Lens	3x Optical Zoom
	Mini. Illumination	0.5Lux, F2.0
	Lens Type	Glass Lens
	Viewing Angle	30.7°~ 69°
Audio	Input	1 channel audio input
	Output	1 channel audio output
	Audio Compression	ADPCM
Video	Image Compression	MJPEG
	Image Frame Rate	15fps(VGA),30fps(QVGA)
	Resolution	640 x 480(VGA), 320 x 240(QVGA)
	Flip Mirror Images	Vertical / Horizontal
	Light Frequency	50Hz, 60Hz, Outdoor
	Video Parameters	Brightness, Contrast
Communication	Ethernet Interface	10Base-T/100Base-TX Ethernet Port
	Supported Protocol	TCP/IP, DHCP, SMTP, HTTP, DDNS, UPNP, PPPoE, FTP, DNS
	Wireless Standard	IEEE 802.11b/g
	Data Rate	802.11b: 11Mbps (Max.), 802.11g: 54Mbps (Max.)
	Wireless Security	WEP & WPA WPA2 Encryption
Physical	Pan/Tilt Angle	Horizontal:355° & Vertical: 90°
	Alarm Input	1 Channel on/off Input
	Alarm Output	1 Channel relay Output
	Infrarde light	66 IR LEDs, night visibility up to 15 meters
	Dimension	165*195*130 mm
Power	Power Supply	DC 12V/2.0A (EU,US adapter or other types optional)
	Power Consumption	10 Watts (Max.)
Environment	Operate Temper.	0° ~ 55°C
	Operating Humidity	20% ~ 85% non-condensing
	Storage Temper.	-25°C ~ 55°
	Storage Humidity	0% ~ 90% non-condensing
PC System Requirements	CPU	2.0GHZ or above (suggested 3.0GHz)
	Memory Size	256MB or above (suggested 1.0GHz)
	Display Card	64M or above
	Supported OS	Microsoft Windows 2000/XP/Vista/7
	Browser	IE6.0/7.0/8.0/Firefox/Safari/Google chrome or other standard browsers
Certification	CE, FCC, RoHS	

6.0 OBTAINING TECHNICAL SUPPORT

We hope your experience with your IP network camera is enjoyable, but if you experience any issues or have any questions that this User's Guide has not answered, please visit www.ebodeelectronics.eu or e-mail support@ebodeelectronics.eu.

This manual is based on the latest version of the camera at its release. Updates might become available overtime, so make sure you always make sure to run the latest firmware version for your camera in order to obtain support.

If your camera does not support some special functions shown in this manual, please contact our technical support team to obtain the latest Firmware and WEB UI file for upgrading.

DECLARATION OF CONFORMITY

Hereby, ebode declares that this IPV68 are in compliance with the essential requirements and other relevant provisions of the following Directives:

1) Directive 1999/5/EC of the European Parliament and of the Council of 9 March 1999 on radio equipment and telecommunications terminal equipment and the mutual recognition of their conformity

2) Directive 2004/108/EC of the European Parliament and of the Council of 15 December 2004 on the approximation of the laws of the Member States relating to electromagnetic compatibility

3) Directive 2006/95/EC of the European Parliament and of the Council of 12 December 2006 on the harmonization of the laws of Member States relating to electrical equipment designed for use within certain voltage limits

4) Directive 2002/95/EC of the European Parliament and of the Council of 27 January 2003 on the restriction of the use of certain hazardous substances in electrical and electronic equipment

5) Directive 2005/32/EC of the European Parliament and of the Council of 6 July 2005 establishing a framework for the setting of eco design requirements for energy-using

Technical data and copies of the original Declaration of Conformity are available and can be obtained from ebode electronics: PB 25, NL-4264ZG, the Netherlands.



User Information for Consumer Products Covered by EU Directive 2002/96/EC on Waste Electric and Electronic Equipment (WEEE)

This document contains important information for users with regards to the proper disposal and recycling of ebode products. Consumers are required to comply with this notice for all electronic products bearing the following symbol:

Environmental Information for Customers in the European Union

European Directive 2002/96/EC requires that the equipment bearing this symbol on the product and/or its packaging must not be disposed of with unsorted municipal waste. The symbol indicates that this product should be disposed of separately from regular household waste streams.

It is your responsibility to dispose of this and other electric and electronic equipment via designated collection facilities appointed by the government or local authorities. Correct disposal and recycling will help prevent potential negative consequences to the environment and human health.



For more detailed information about the disposal of your old equipment, please contact your local authorities, waste disposal service, or the shop where you purchased the product.

DECLARATION OF CONFORMITY TO R&TTE DIRECTIVE 1999/5/EC

for the European Community, Switzerland, Norway, Iceland and Liechtenstein

Product category: general consumer (category 3).

English: This equipment is in compliance with the essential requirements and other relevant provisions of the European R&TTE Directive 1999/5/EC

Deutsch [German]: Dieses Gerät entspricht den grundlegenden Anforderungen und den weiteren entsprechenden Vorgaben der Richtlinie 1999/5/EU.

Nederlands [Dutch]: Dit apparaat voldoet aan de essentiële eisen en andere van toepassing zijnde bepalingen van de Richtlijn 1999/5/EC.

Svenska [Swedish]: Denna utrustning står i överensstämmelse med de väsentliga egenskapskrav och övriga relevanta bestämmelser som framgår av direktiv 1999/5/EG.

Français [French]: Cet appareil est conforme aux exigences essentielles et aux autres dispositions pertinentes de la Directive 1999/5/EC

Español [Spanish]: Este equipo cumple con los requisitos esenciales así como con otras disposiciones de la Directiva 1999/5/CE.

Português [Portuguese]: Este equipamento está em conformidade com os requisitos essenciais e outras provisões relevantes da Directiva 1999/5/EC.

Italiano [Italian]: Questo apparato é conforme ai requisiti essenziali ed agli altri principi sanciti dalla Direttiva 1999/5/CE.

Norsk [Norwegian]: Dette utstyret er i samsvar med de grunnleggende krav og andre relevante bestemmelser i EU-direktiv 1999/5/EF.

Suomi [Finnish]: Tämä laite täyttää direktiivin 1999/5/EY olennaiset vaatimukset ja on siinä asetettujen muiden laitetta koskevien määräysten mukainen.

Dansk [Danish]: Dette udstyr er i overensstemmelse med de væsentlige krav og andre relevante bestemmelser i Direktiv 1999/5/EF.

Polski [Polish]: Urządzenie jest zgodne z ogólnymi wymaganiami oraz szczególnymi warunkami określonymi Dyrektywą UE: 1999/5/EC

Also available from ebode: LightSpeaker

The Next Bright Idea

The unique ebode LightSpeaker™ cleverly combines low consumption LED lighting with wireless sound in one easy 'plug and play' system that can be hidden away in a lampshade or light fitting. Install it into any room in just a few minutes without tools or extra wiring!

LightSpeaker™ can be mounted into many different light fixtures including pendants fittings, table and floor lamps.

It can even be recessed into your ceiling using our custom-made fitting. All you need is an iPod™, HiFi, television or PC to provide your music and a standard E27 socket to plug into, and this multiroom, two source system will deliver brilliant lighting and tuneful music around your home - free of wires and headphones.



How it works







Up to two music sources - an iPod™ and a radio for example, can be connected to the transmitter in the base station, which wirelessly sends the sound to the LightSpeakers™ which are screwed into a standard E27 socket to receive their power.

The wireless transmitter base station or the supplied remote control allow you to control your source, music and lighting levels from anywhere in your home. Up to four pairs of LightSpeakers™ can be 'paired' to one base station.



Also available from ebode: Home Automation Modules

ebode offers a wide range of Home Automation products and solutions which help you control your 'electrical environment'. The home automation modules are ideal to (remotely) control blinds/rollers, home cinema screen, lighting, and other household appliances.

On-Wall Modules

Product	Description	
EM	2-position RF wall switch, ideal for retro fit installations to e.g. control blinds, shutter, home cinema screens but also lighting or appliances.	
IMRF	Single position RF wall switch, ideal for retro fit installations to e.g. control applications or an inside or outside light.	
RMV	Control your shutter, blind or e.g. cinema screen via the front panel keys, or remotely via any ebode / X10 compatible controller.	
RMA	Control your appliance, light or e.g. pump via the front panel keys, or remotely via any ebode/X10 compatible controller.	
RPA, RPL, RPT	Ideal for retro fit installations, the classic X10 plug-in module in a new and stylish jacket. Control your appliance or lamps etc. via any ebode or X10 compatible controller via PLC AND RF!	
TPC / TMML	New stylish RF remote to control any ebode or X10 compatible RF receiver.	

In-Wall Modules

Product	Description	
EMML	2-position RF in-wall module to install behind any mechanical wall switch. The EMML is battery operated.	
RMML	In-wall RF receiver, ideal for any switches lights and appliances up to 300W.	



www.ebodeelectronics.eu