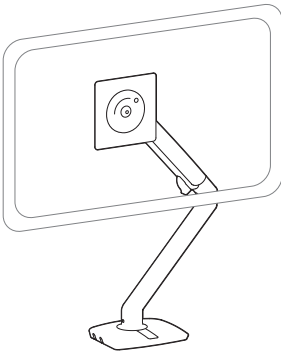
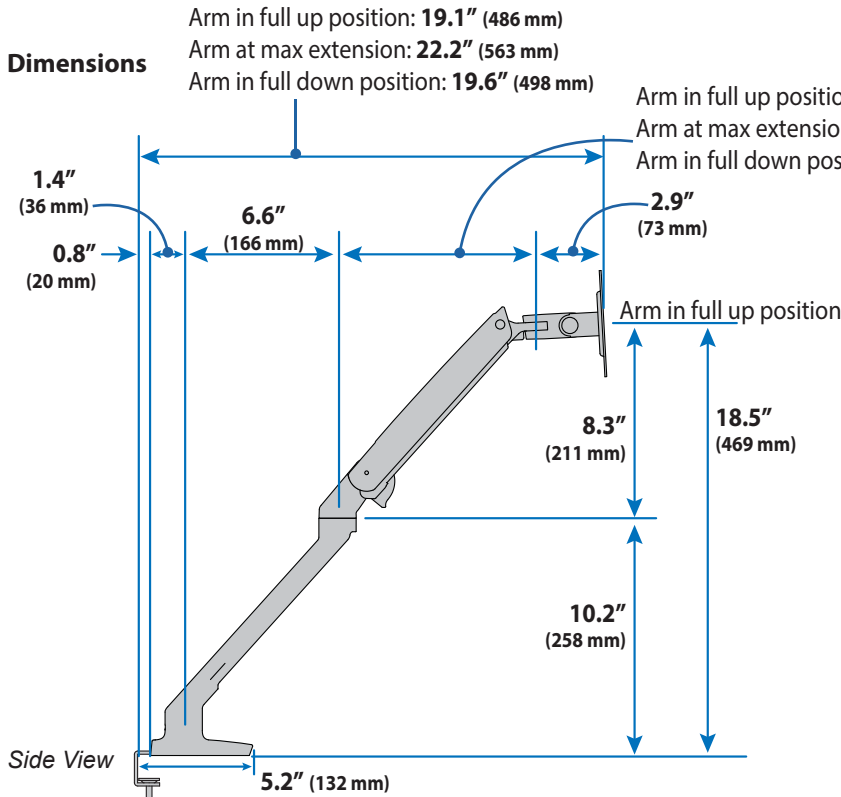


MXV Desk Monitor Arm

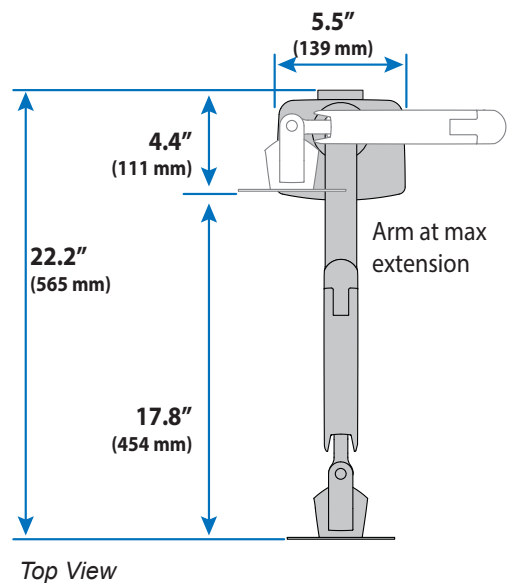
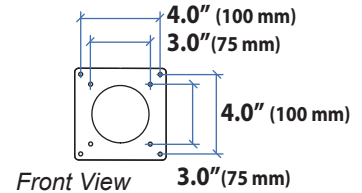
with C-Clamp (under mount)



Dimensions

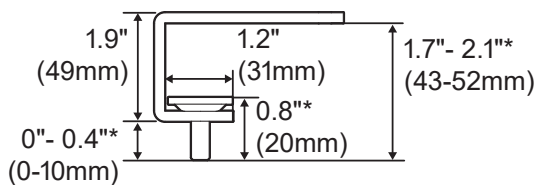


Monitor Interface Bracket



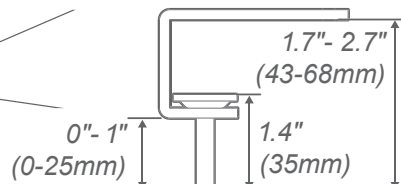
Desk Thickness

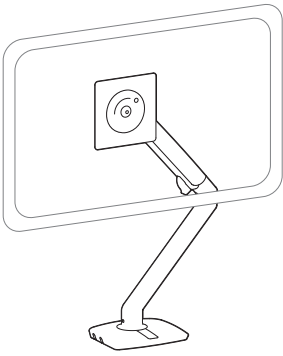
1"- 1.26"*
 (25-32mm)



*Optional longer screws can be added for thinner desks:

0.5"- 1.26"
 (12-32mm)

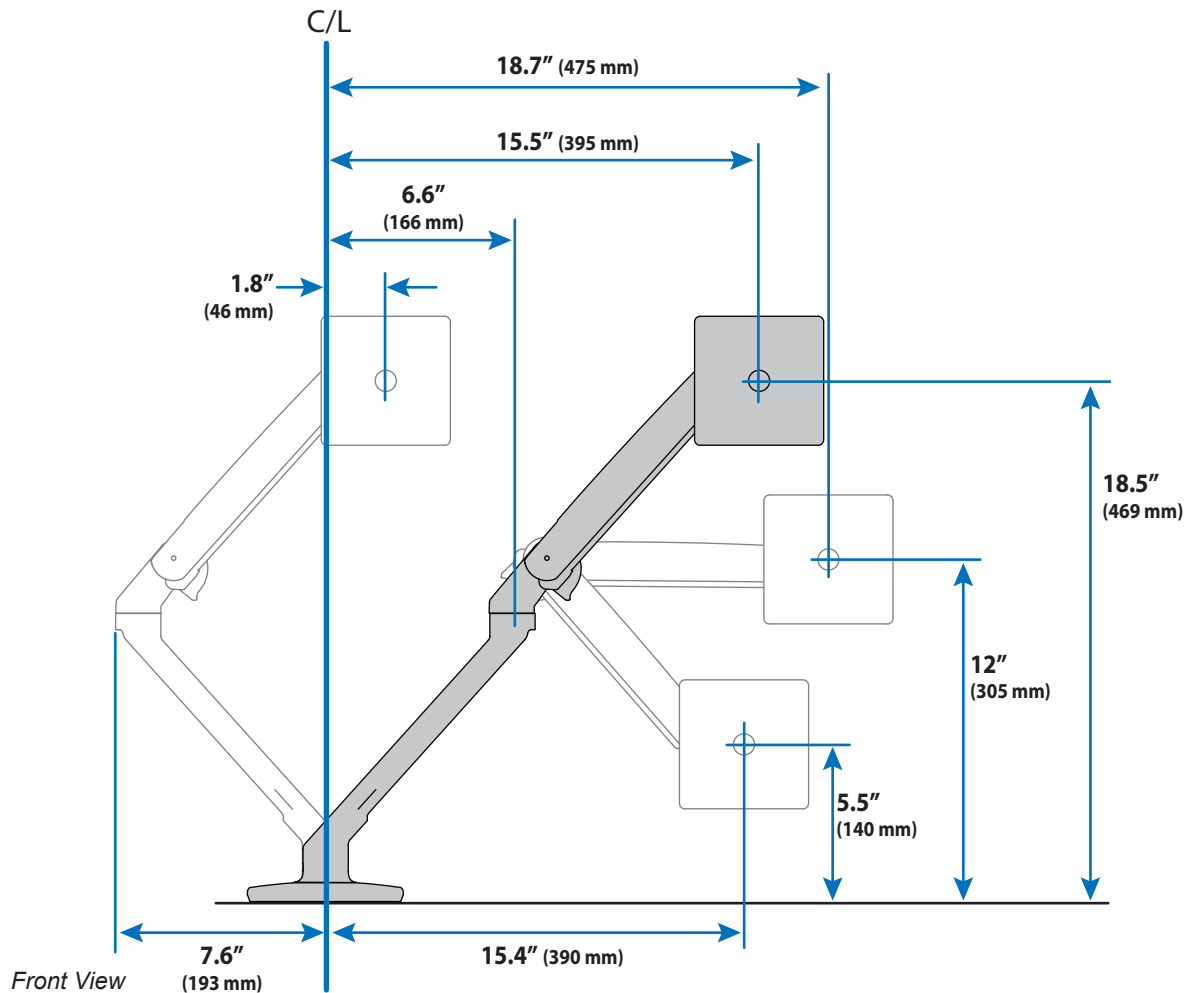




MXV Desk Monitor Arm

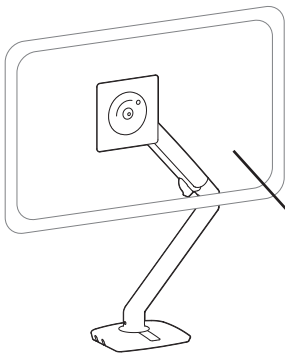
with C-Clamp (under mount)

Dimensions



MXV Desk Monitor Arm

with C-Clamp (under mount)



Weight Capacity

7 lbs (3.2 kg) - 20 lbs. (9.1 kg)

Monitor depth greater than 2.5" (64 mm) may diminish capacity.
Call Ergotron for more information.

Range of Motion

